

ARCHITECTURAL GRANDEUR OF WILSON COLLEGE

A PRESENTATION BY
VIKAS DILAWARI
CONSERVATION ARCHITECT

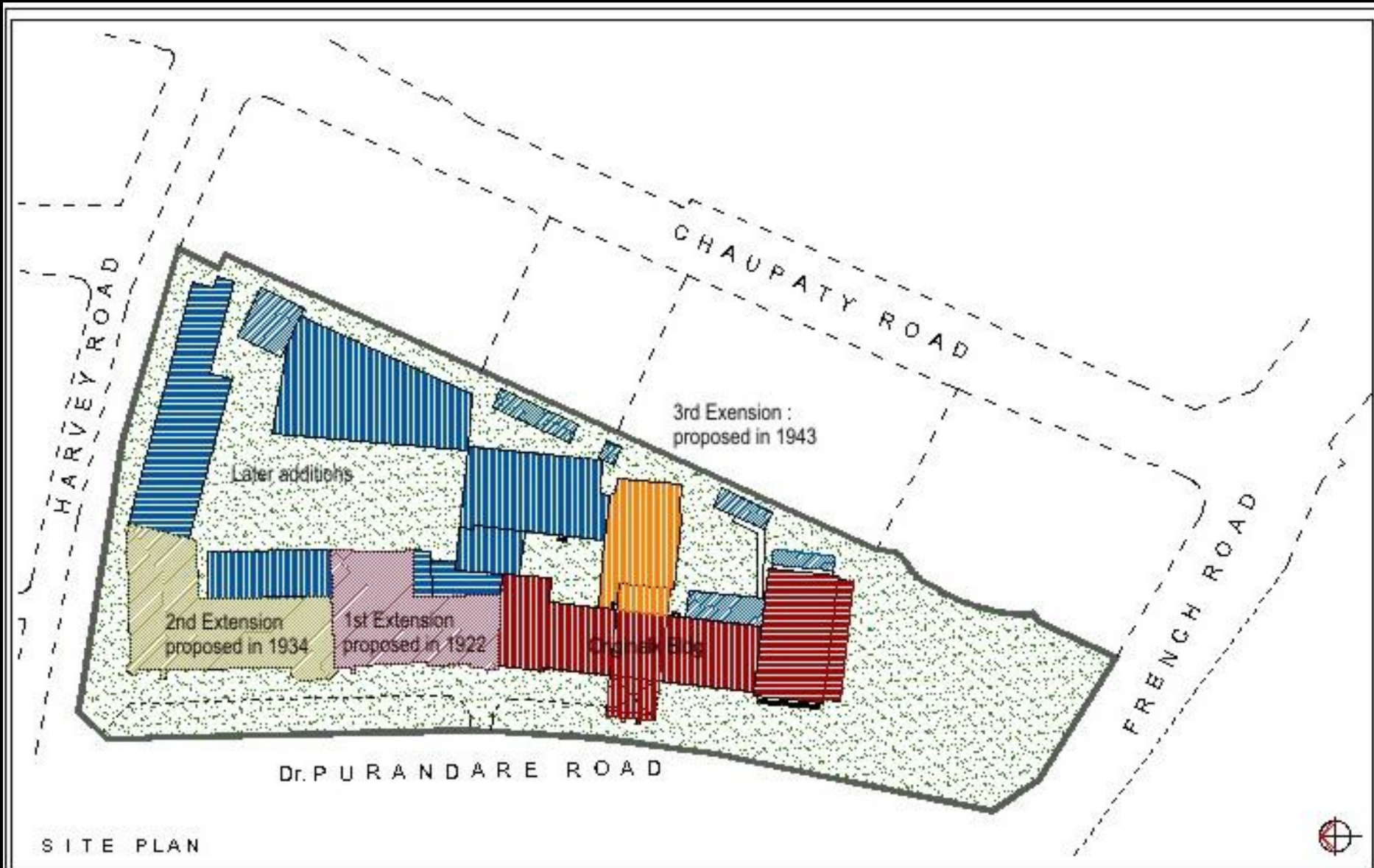
THE ORIGINAL BUILDING AS DESIGNED IN 1863



EXTENSION IN 1922



SITE PLAN SHOWING THE GROWTH OF COLLEGE



SITE PLAN

WILSON COLLEGE CHAUPATY MUMBAI

scale 1" = 64'

Note: retraced from Gregson Batley & King layout plan dt. 7th June 1960.

WEST VIEW



ENTRANCE PORCH



SOUTH FACADE



VERANDAHS





MAGNIFICENT HALL



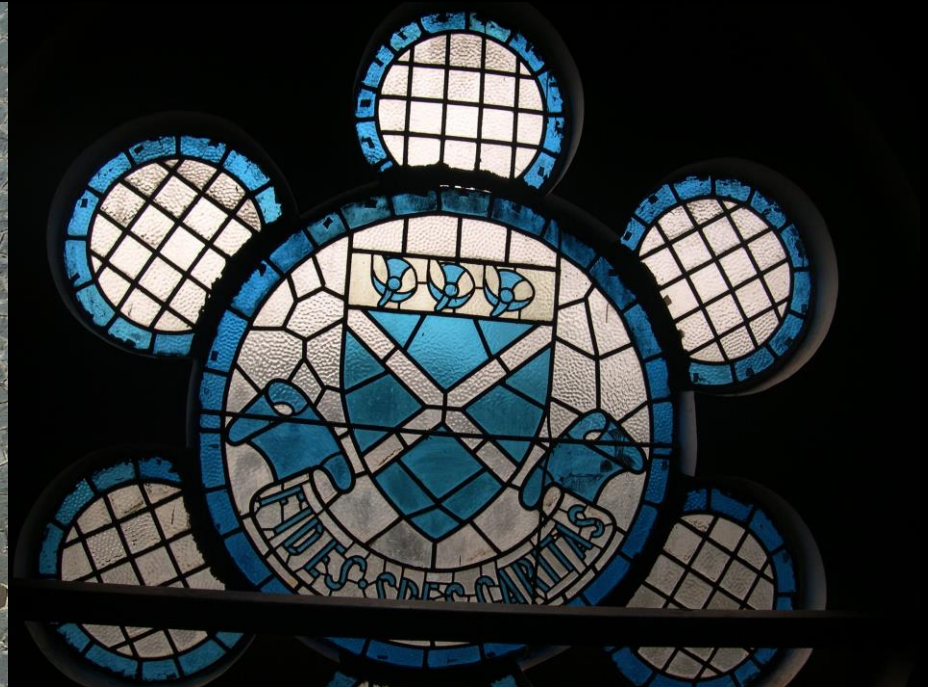
MAGNIFICENT HALL



CHAPEL ON THE NORTH SIDE



STAINED GLASS



MOSAIC FLOORING



ENTRANCE STAIRCASE



DEFECTS

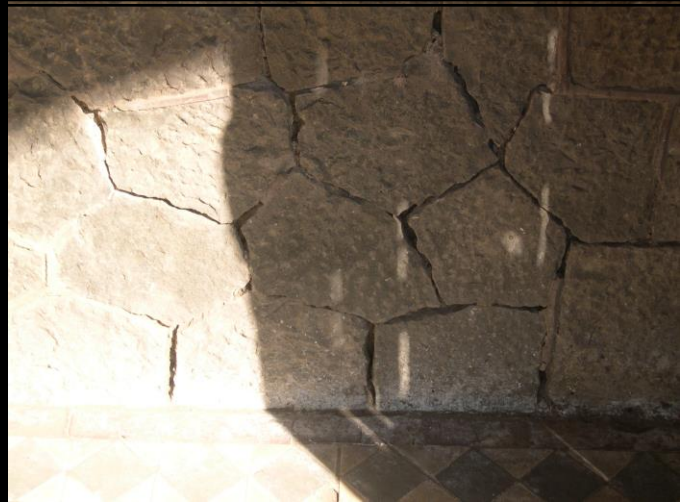
ROOF CONDITIONS



ROOF CONDITIONS



LIME MORTAR REPOINTING REQUIRED



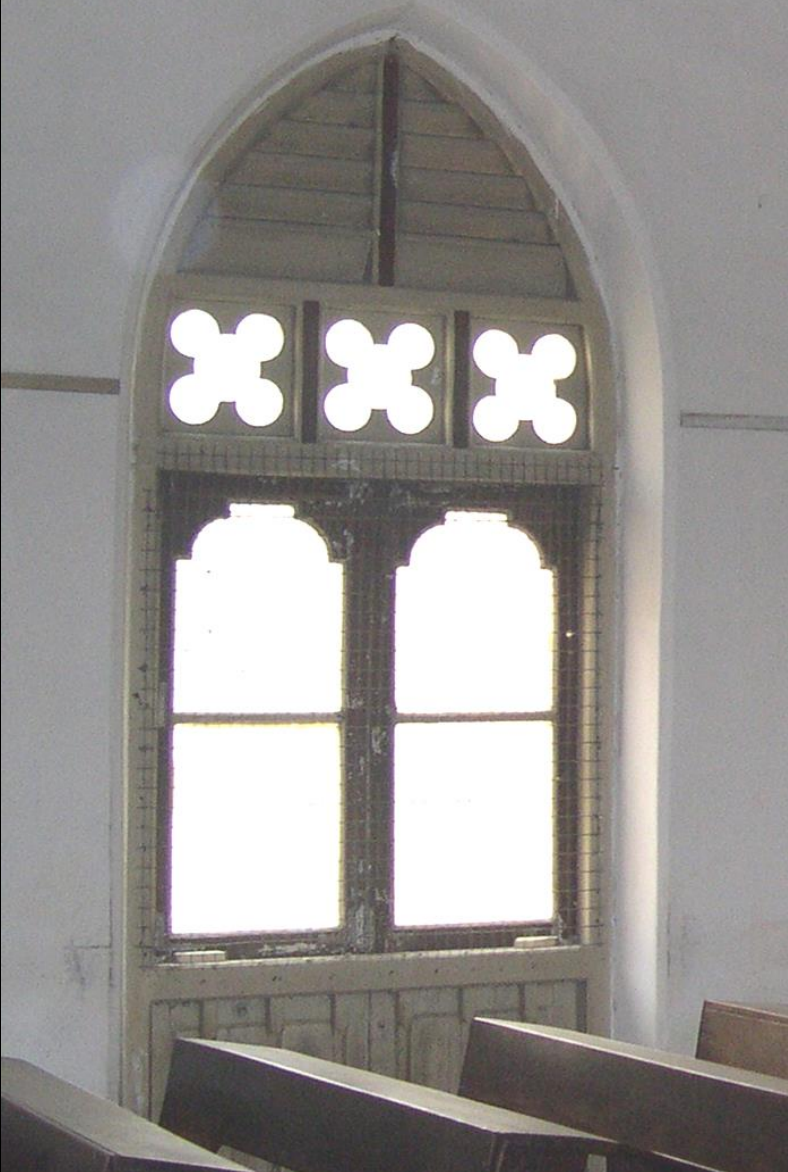
STRUCTURAL DEFECTS



LIME MORTAR REPOINTING REQUIRED



CARPENTARY DETAILS



FLOORING DETAILS



PAINTING AND POLISHING



SMALL BUT RELEVANT DETAILS NEED TO BE RESTORED

