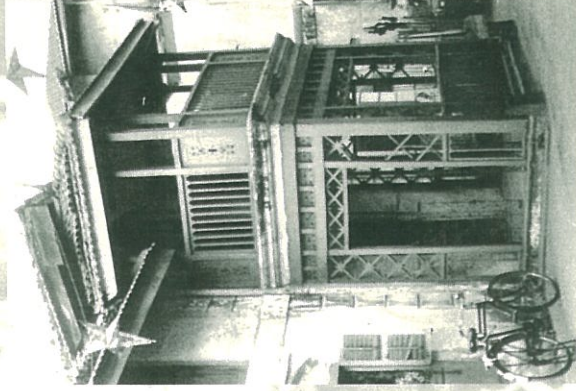
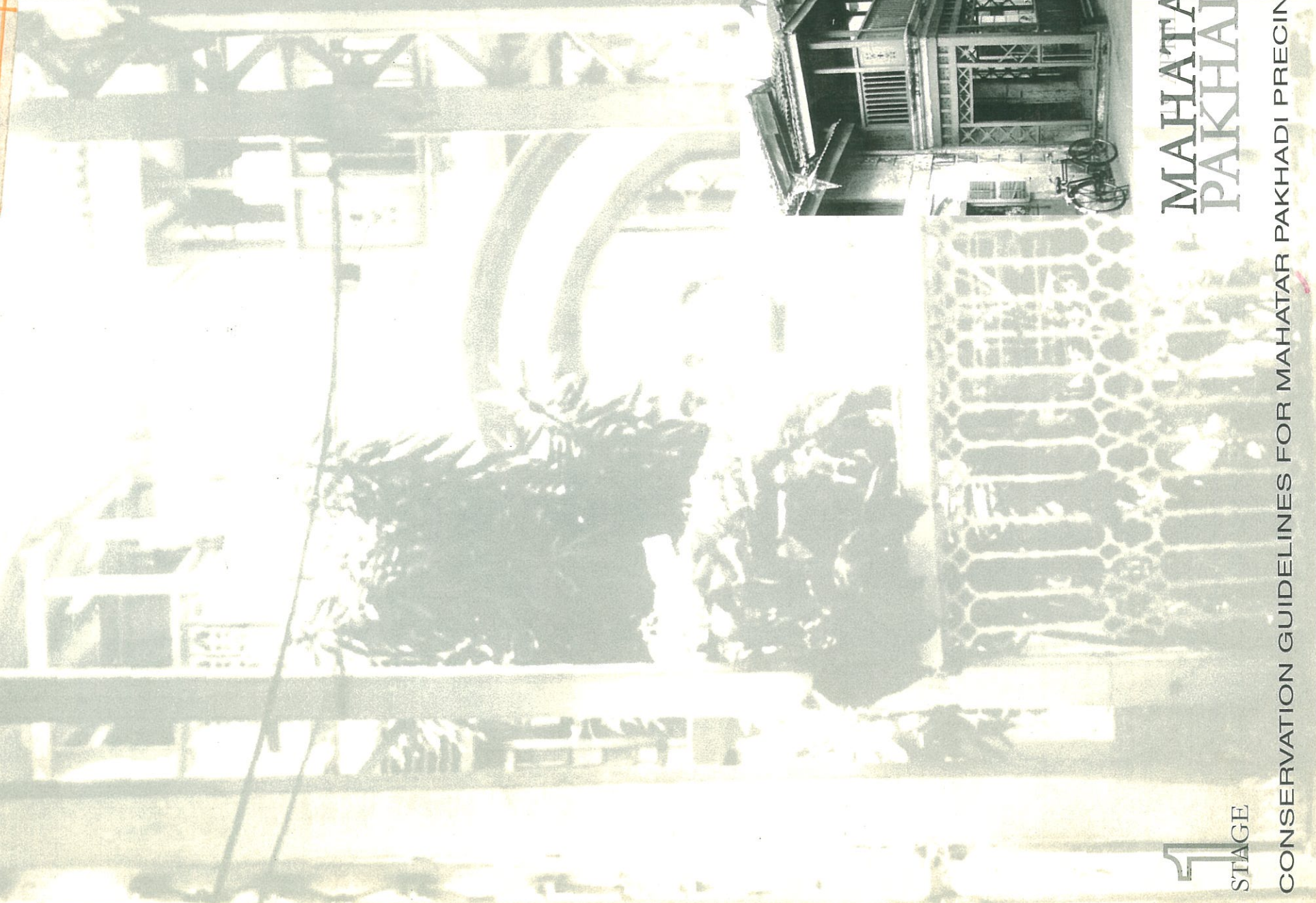


for MMR-Heritage Conservation Society

S.No. 9

A STUDY CONDUCTED FOR MMR-HERITAGE CONSERVATION SOCIETY BY



1

STAGE

# MAHATAR PAKHADI

CONSERVATION GUIDELINES FOR MAHATAR PAKHADI PRECINCT

MIS-2055

CONSERVATION GUIDELINES  
FOR MAHATAR PAKHADI PRECINCT, MUMBAI

STUDY CONDUCTED BY PANKAJ JOSHI,  
FOR M M R - HERITAGE CONSERVATION SOCIETY

1<sup>st</sup>

# STAGE REPORT

M. M. R. D. A.  
LIBRARY.

Call No.

Acc. No. MIS-2655

File:

# 1

ORIGIN  
AND ITS GROWTH



Contents:

Introduction

**Chapter 1.0 Origin and Growth**

- 1.1 Historical Context
- 1.2 History and Growth
  - 1.2.1 Changes in Spatial Patterns And Functional Land Uses Bombay (City Context) Mazagaon (Area Context)
- 1.3 References to Mahatar Pakhadi (Study Area) and Mazagaon Division in Administration Records and other sources in chronological order
  - 1.3.1 1534-1689
  - 1.3.2 1726-1810
  - 1.3.3 1824-1915
- 1.4 Summary Of Transformation In The Physical Pattern Of Mahatar Pakhadi And Its Environs
  - 1.4.1 Pre 1650
  - 1.4.2 1812
  - 1.4.3 1872
  - 1.4.4 1906
  - 1.4.5 1915
  - 1.4.6 1981

**Chapter 2 Objectives and Stages of Work**

- 2.1 Main Objectives
- 2.2 Stages of Work

**Chapter 3 Methodology**

**Chapter 4 Study and Analysis of Present Built Environment:**

- 4.1 Segment Locality Level
- 4.2 Delineation of the Study Area
- 4.3 Open Space and Built Form Pattern
- 4.4 Traffic Pattern
- 4.5 Topography of Buildings
- 4.6 Use of Buildings
- 4.7 Age of Buildings
- 4.8 Condition of Buildings
- 4.9 Ownership of Buildings
- 4.10 Physical Transformation of Buildings
- 4.11 Present Demographic Account and Socio Economic Data

**Bibliography**

## **Introduction**

The report is laid out as follows:

Information and Introduction in Chapter One

Objectives and Stages of work are stated in Chapter Two

Methodology is established in the Third Chapter

Intentions are recapitulated in the Fourth Chapter.

The first chapters describe the origin of Mahatar Pakhadi, its growth and development in Mumbai City

The third highlights the process and the working structure of the research followed by the fourth chapter examining the statement and compilation of the researched data.

Here I wish particularly to mention and express thanks to Gauri Pandit, Imtiaz Lokhandwala, Sachin Narkar, Anand Achari and Atul Parulekar for their assistance and Members of Mahatar Pakhadi Residents Welfare Association for their support.

**Pankaj Joshi**  
Conservation Architect