



Erangal Precinct

Heritage Conservation and Environment Improvement Plan

Stage 3 & 4

Significance and Issue
Identification

June 8, 2011

Shirley Ballaney
Bindu Nair



HCP Design and Project
Management, Ahmedabad



CONTENTS

- 1. Erangal**
- 2. Methodology & Approach**
- 3. Inferences, Significance & Issues**
- 4. Objectives, Strategies & Proposals**
- 5. Schematic Proposals**

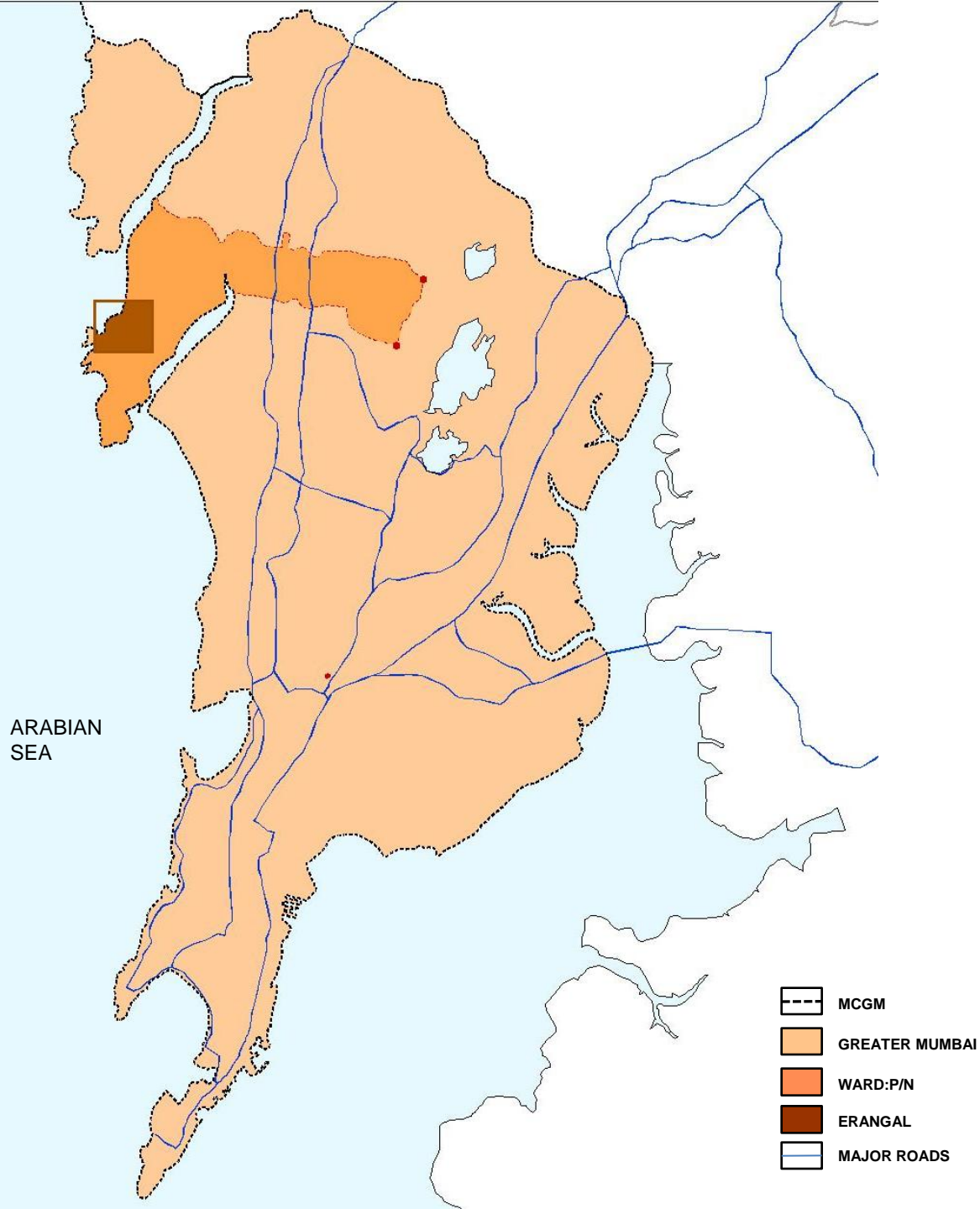
1.ERANGAL

A. Introduction

B. Location and Connectivity

C. Overview





A. Introduction

- Historic Settlement
- One of the original agrarian settlements of Mumbai
- Origin traced to the 1530s, rebuilt post World War 2 in the 1950s.
- Located on the north western coast of Mumbai in Madh island
- Lies within P/N ward of MCGM



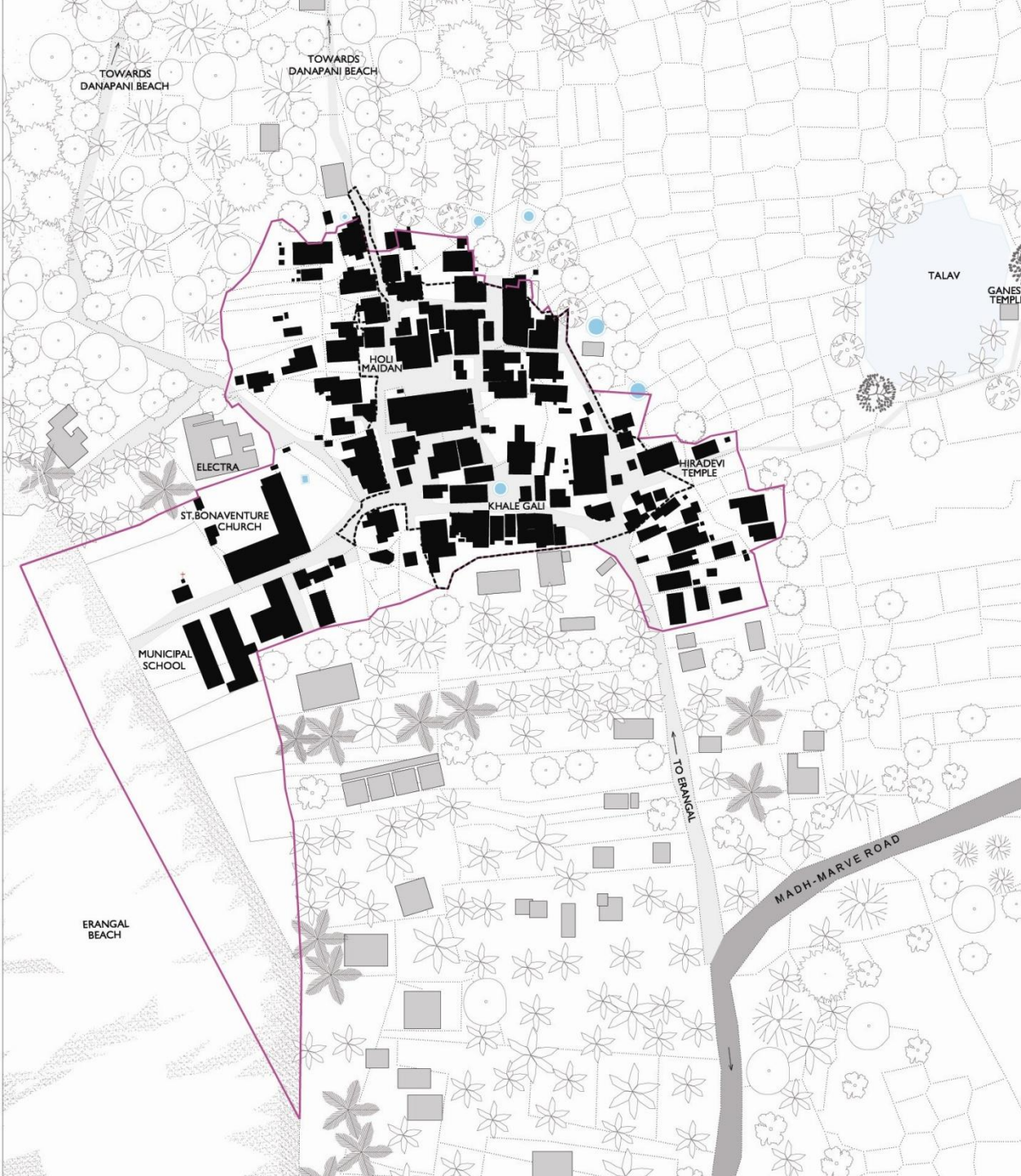
B. Location and Connectivity

- Located between Akse and Bhati
- Malad-Marve road connects Erangal to rest of Mumbai
- Access via ferry to Madh jetty from Versova
- Serviced by BEST buses



C. Overview

- Erangal beach to the west, agricultural fields to the north and east
- Farm houses to the south
- Landmarks
 - Erangal beach
 - Danapani beach
 - St. Bonaventure Church
 - Bastion



C. Overview

- Organic built form
- Character of built fabric and public spaces is retained
 - strong community structure
 - limited access
 - CRZ regulations
- However there is significant transformation of structures
- Insufficient and unmaintained infrastructure
- Details
 - Area of the Precinct Ha 3.89
 - Total number of structures 119
 - Number of households 138
 - Number of persons 668

28800024
28800122
9821284298

सुभाष पोलि हाउस, महामंदम एनर्जी व्हिज

Subhash Polli House, Mahamandam Energy Vign

[SHRILE KAJESHWAR]

THE **PICNIC** COTTAGE

FOR FAMILY & FRANDS































2. METHODOLOGY AND APPROACH

A. Methodology

B. Approach

- i. Consultative**
- ii. Addressing Heritage and Environment**
- iii. Including the Precinct Environs**
- iv. Undertaking a Thorough Documentation**



A. Methodology

STAGE 1:
Inception



STAGE 2:
Detailed condition assessment



STAGE 3 & 4:
Significance and issue identification

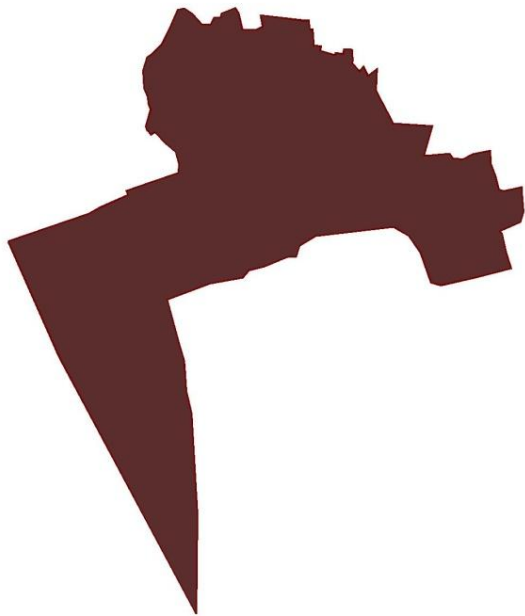


STAGE 5:
Action plans



STAGE 6:
Development guidelines





Consultative



Heritage and environment



Addressing the surrounding context



Systematic and thorough documentation

B. Approach





i. Consultative

MMR-HCS

Data Collection
Meetings

Consultation
Meetings

Field Notes

01

Meeting with Mr. Dilip Mhatre in Erangal Village

VENUE: Shop, Erangal Village. DATE: 25 May 2010, TIME: 10.30 am to 11.30 am

Attended By:

Mr. Dilip Mhatre	Chairman, Saishav Kshatriya Bhandari Samaj, Erangal Village
Ms. Shirley Ballaney	Senior Principal Planner, HCPDPM
Ms. Bindu Nair	Principal Planner, HCPDPM
Ms. Sonal Shah	Project Associate, HCPDPM

This was the first meeting with Mr. Dilip Mhatre, Chairman of SKBS. The aim of the meeting was to familiarize him with the project, its objectives and goals, establish a rapport with him and schedule a meeting with the Committee of Saishav Kshatriya Bhandari Samaj.

Initially, Mr. Mhatre was reluctant to communicate with the team. The team explained him

25th May, 2010

Preliminary Consultations at project inception to inform about the project, establish rapport and set up a road map

i. Consultative



MMR-HCS

Data Collection
Meetings

Consultation
Meetings

Field Notes

02

Meeting with the Committee of Saishav Kshatriya Bhandari Samaj in Erangal

VENUE: Hiradevi Temple, Erangal Village. DATE: 13 June 2010, TIME: 12.30 pm to 2 pm

Attended By:

Mr. Dilip Mhatre
Mr. Pravin Mhatre
Mr. Chetan Patil
Mr. Sunil Mhatre
Ms. Shirley Ballaney
Ms. Bindu Nair

President, Saishav Kshatriya Bhandari Samaj
Vice-President, Saishav Kshatriya Bhandari Samaj
Secretary, Saishav Kshatriya Bhandari Samaj
Treasurer, Saishav Kshatriya Bhandari Samaj
Senior Principal Planner, HCPDPM
Principal Planner, HCPDPM

The meeting started with showing the map prepared for the Erangal precinct to all the members of the SKBS. This was followed by explaining all the members about the project. The members were asked to express their opinion about the project and discuss relevant issues. The following emerged during the meeting:

- The first issue brought out by the Committee in the meeting was the water supply related problems. The committee informed that there is a water shortage and the diameter of the water supply pipe needs to be increased from 4 inches to 6 inches. Presently, they get water supply for approximately 1-1.5 hours. Further the water in the wells is not

13 June, 2010

Introducing the project and trust building with the SKBS committee and understanding the precinct and community priorities



i. Consultative



11 to 14 June, 2010

Discussions with groups of residents and understanding their views on heritage and other infrastructure

i. Consultative



11 to 14 June, 2010

Every household approached for detailed documentation and understanding their views on heritage and other infrastructure

i. Consultative



17 April, 2011

Discussion of preliminary proposals with the SKBS

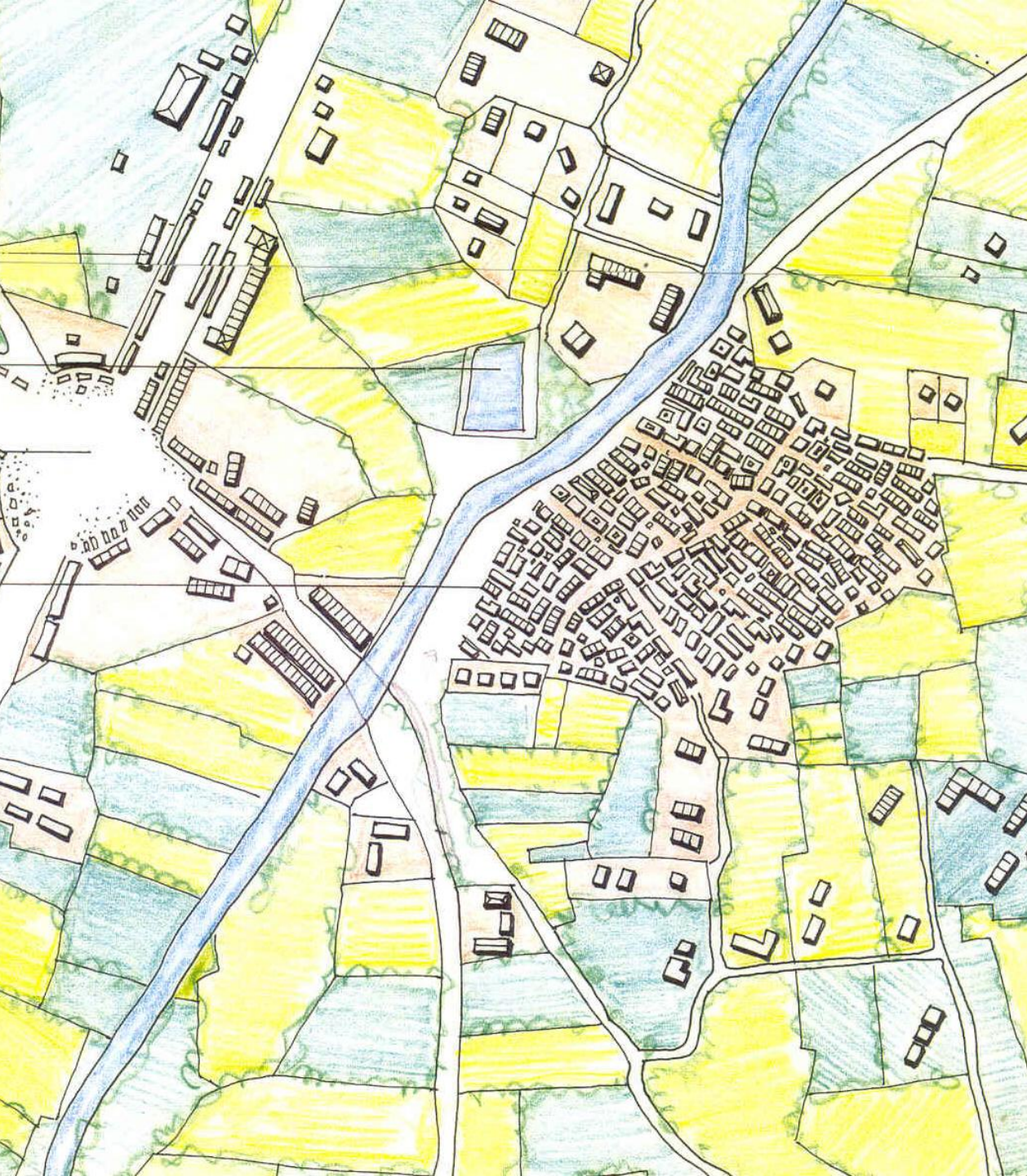
ii. Heritage and Environment



ii. Heritage and Environment

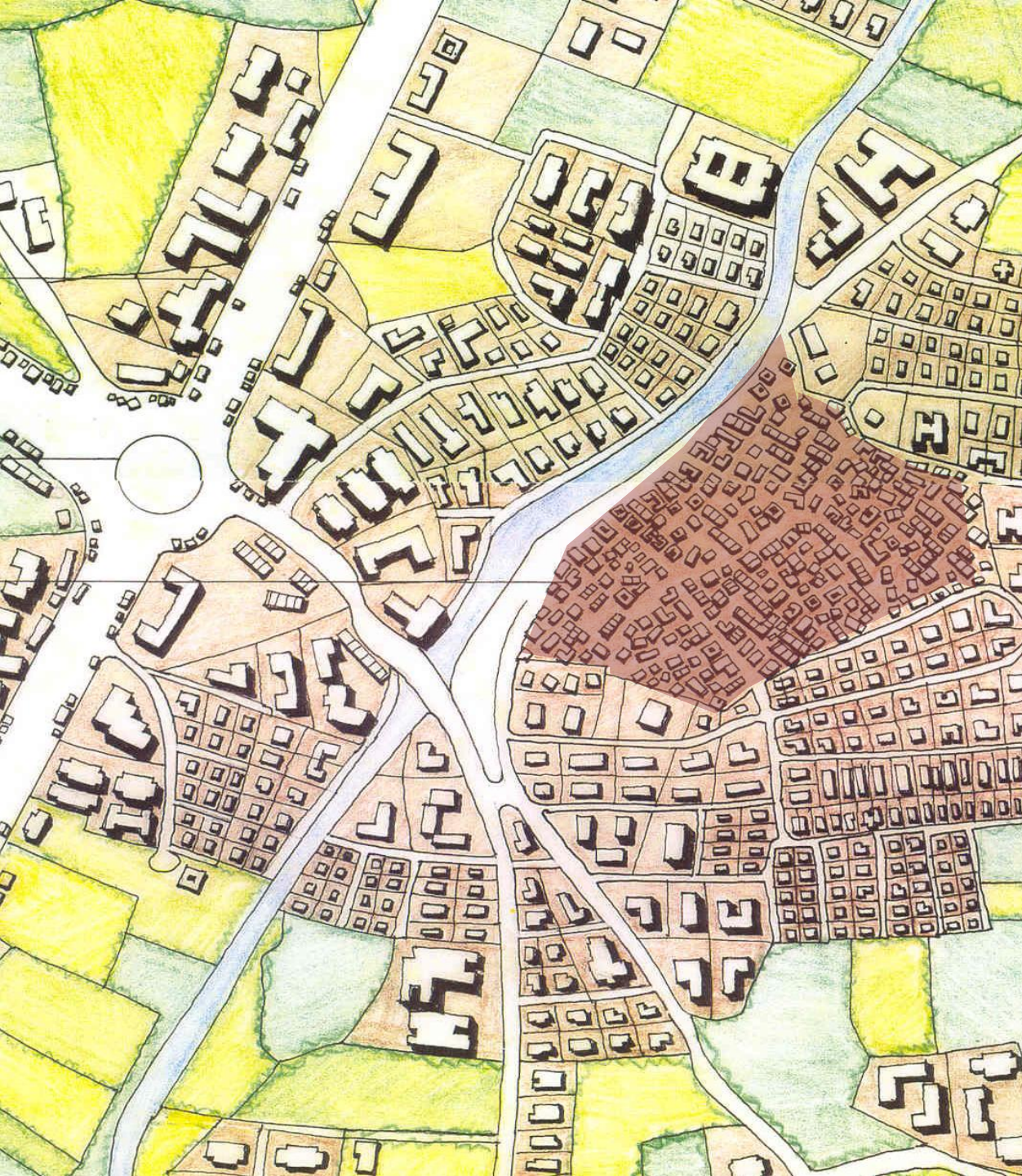


iii. Addressing the Surrounding Context



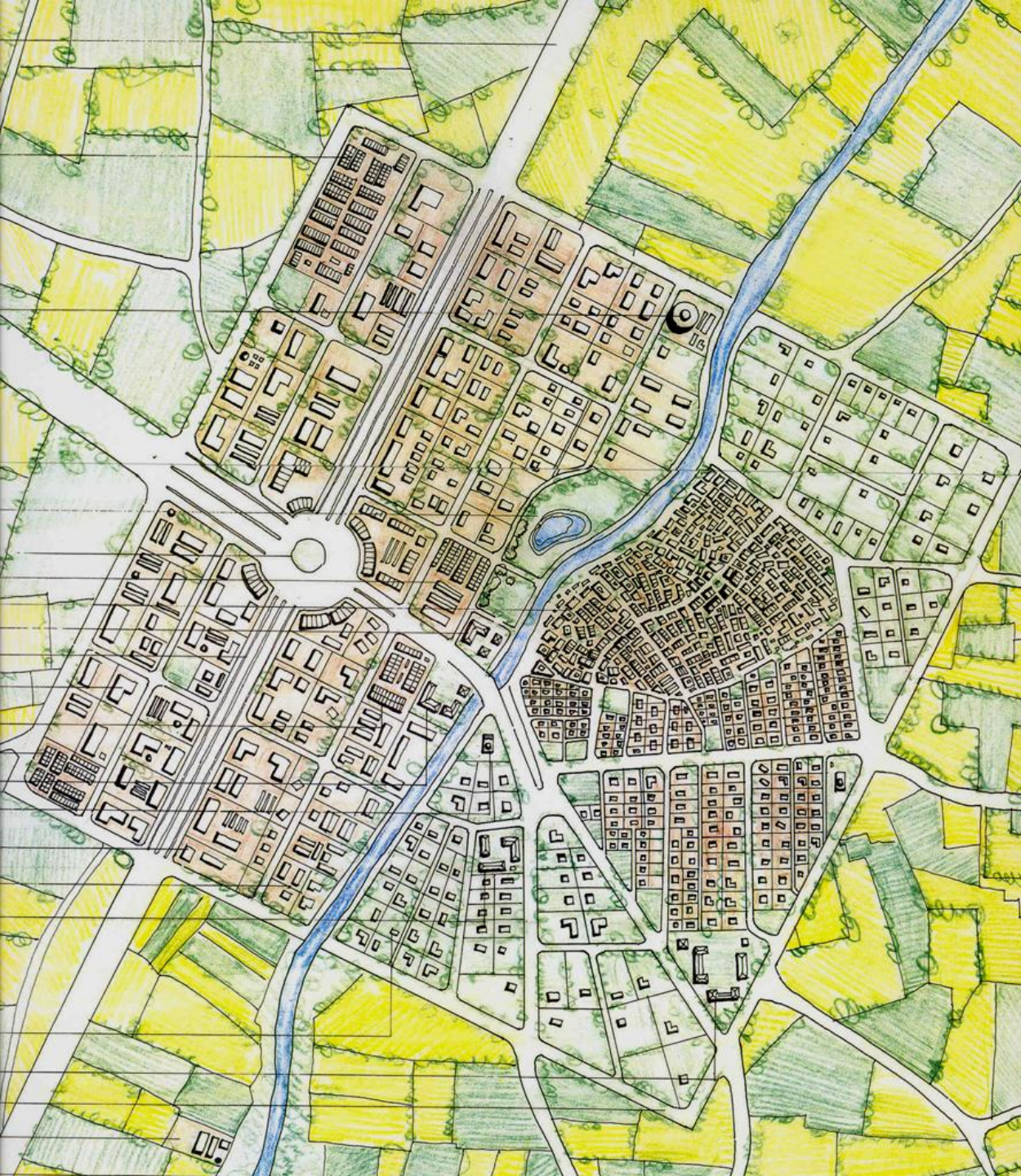
Old settlement

iii. Addressing the Surrounding Context



Unplanned growth of the settlement

iii. Addressing the Surrounding Context



Growth can be managed



Erangal, 2003



Erangal, 2010



iv. Systematic and Thorough Documentation

City survey over satellite image



iv. Systematic and Thorough Documentation

Revised foot prints over city survey

iv. Systematic and Thorough Documentation



Final alignment of structures

The map displays the 14th Ward in Chicago, with blocks numbered 14 through 70. The ward is outlined in a thick black dashed line. The map includes a grid of streets and a legend for block numbers. The 14th Ward is highlighted in a darker shade of gray. The map shows blocks 14 through 70, with some blocks having sub-identifiers like 14a, 14b, 14c, 14d, 14e, 14f, 14g, 14h, 14i, 14j, 14k, 14l, 14m, 14n, 14o, 14p, 14q, 14r, 14s, 14t, 14u, 14v, 14w, 14x, 14y, 14z. The map also shows the location of the 14th Ward relative to the 13th and 15th wards.

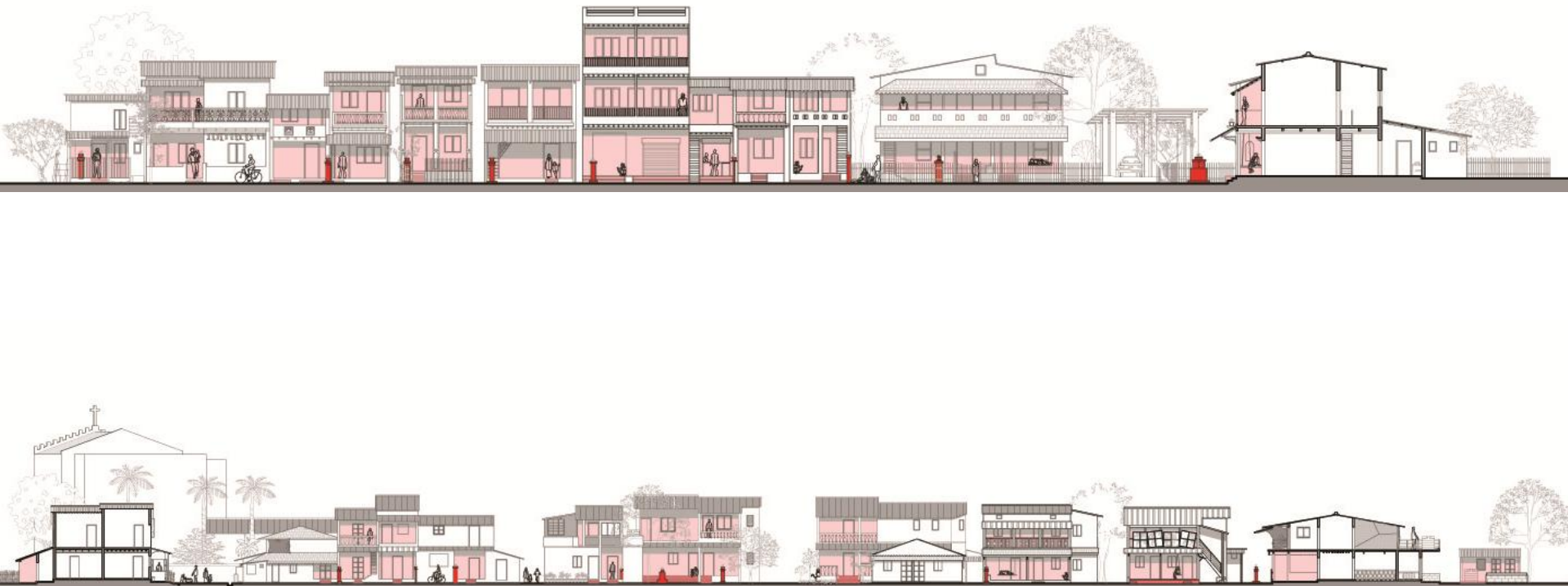
The map displays the 14th Ward in Chicago, with blocks numbered 14 through 70. The ward is outlined in a thick black dashed line. The map includes a grid of streets and a legend for block numbers. The 14th Ward is highlighted in a darker shade of gray. The map shows blocks 14 through 70, with some blocks having sub-identifiers like 14a, 14b, 14c, 14d, 14e, 14f, 14g, 14h, 14i, 14j, 14k, 14l, 14m, 14n, 14o, 14p, 14q, 14r, 14s, 14t, 14u, 14v, 14w, 14x, 14y, 14z. The map also shows the location of the 14th Ward relative to the 13th and 15th wards.

iv. Systematic and Thorough Documentation



Final base map with structure plans

iv. Systematic and Thorough Documentation



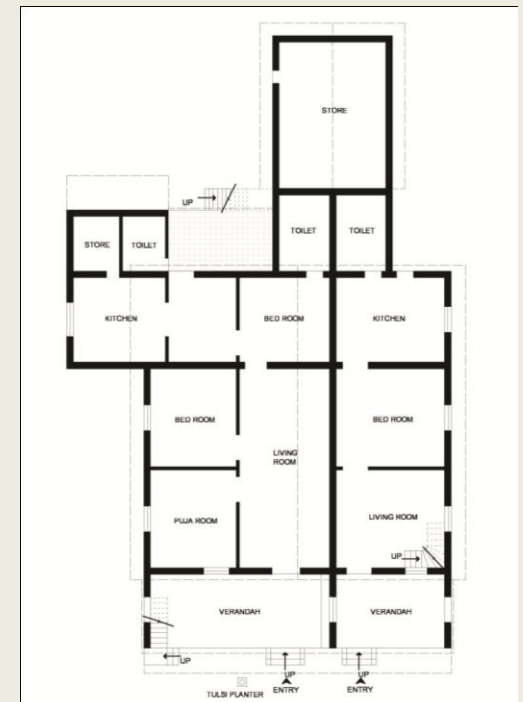
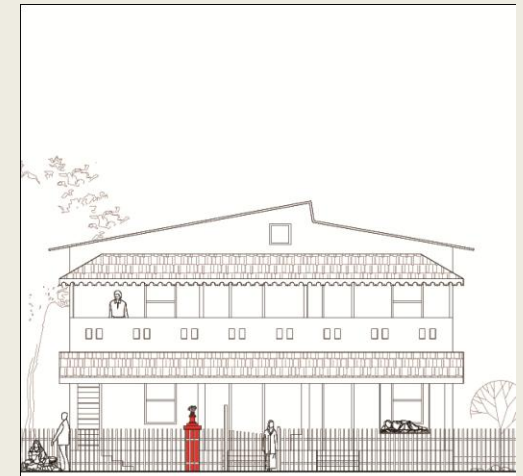
Sections through the precinct

iv. Systematic and Thorough Documentation



Street sections

iv. Systematic and Thorough Documentation



iv. Systematic and Thorough Documentation



3. INFERENCES/SIGNIFICANCE, COMMUNITY VALUES AND ISSUES

- A. Architectural Heritage**
- B. Public Realm**
- C. Built form, Land use & Growth**
- D. Physical Infrastructure**
- E. Community Structure**
- F. Cultural Practices**
- G. Governance**





A. Architectural Heritage



B. Public Realm



C. Builtform, Landuse & Growth



D. Physical Infrastructure



E. Community Structure



F. Cultural Practices



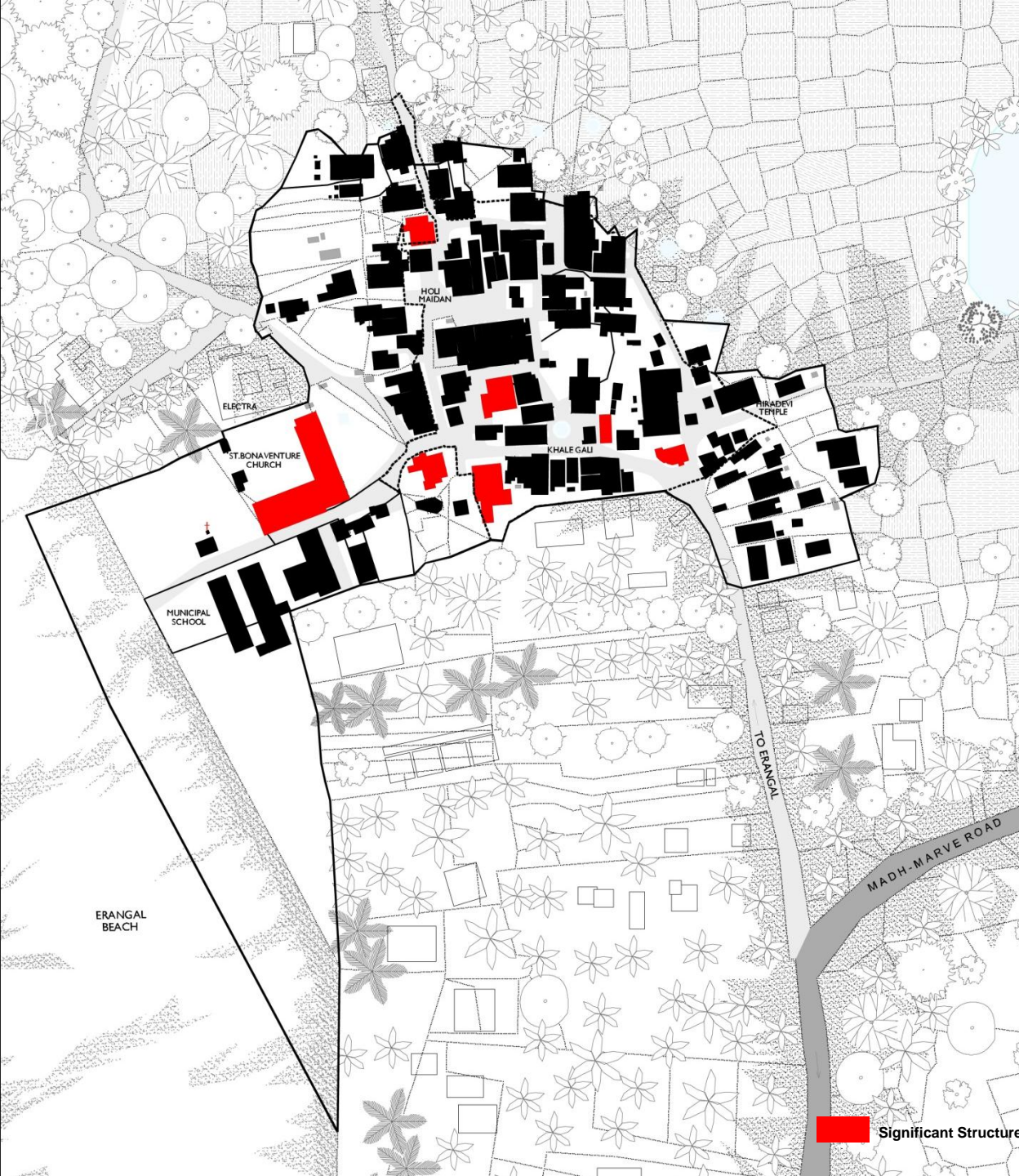
G. Governance



INFERENCES/SIGNIFICANCE

COMMUNITY VALUES

ISSUES



A. Architectural Heritage

Inferences / Significance

- No particular stylistic significance in individual structures
- Robust construction systems in wood
- Typical plan typologies
- Distinctive urban form, scale, roofscapes and elements.
- Substantial transformation – out of 119 only 2 in original condition
- 3 completely transformed

Community Values

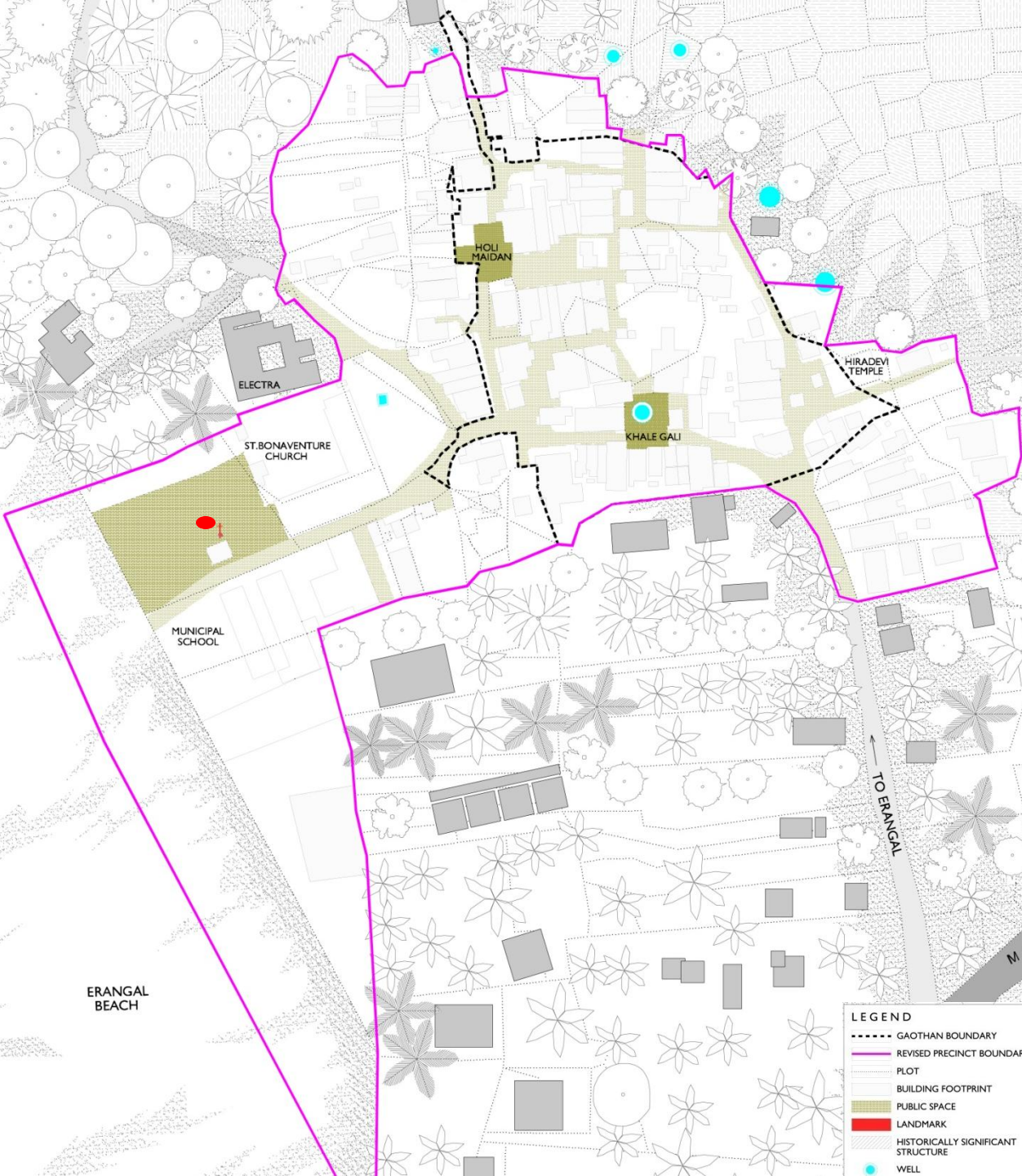
- Perceives the historic value and feels it should be retained
- High cost of maintenance is forcing transformation
- Environmental improvements critical

Issues

- High cost of maintenance triggering incongruent transformations
- Regulations - CRZ leading to authorized additions







B. Public Realm

Inferences / Significance

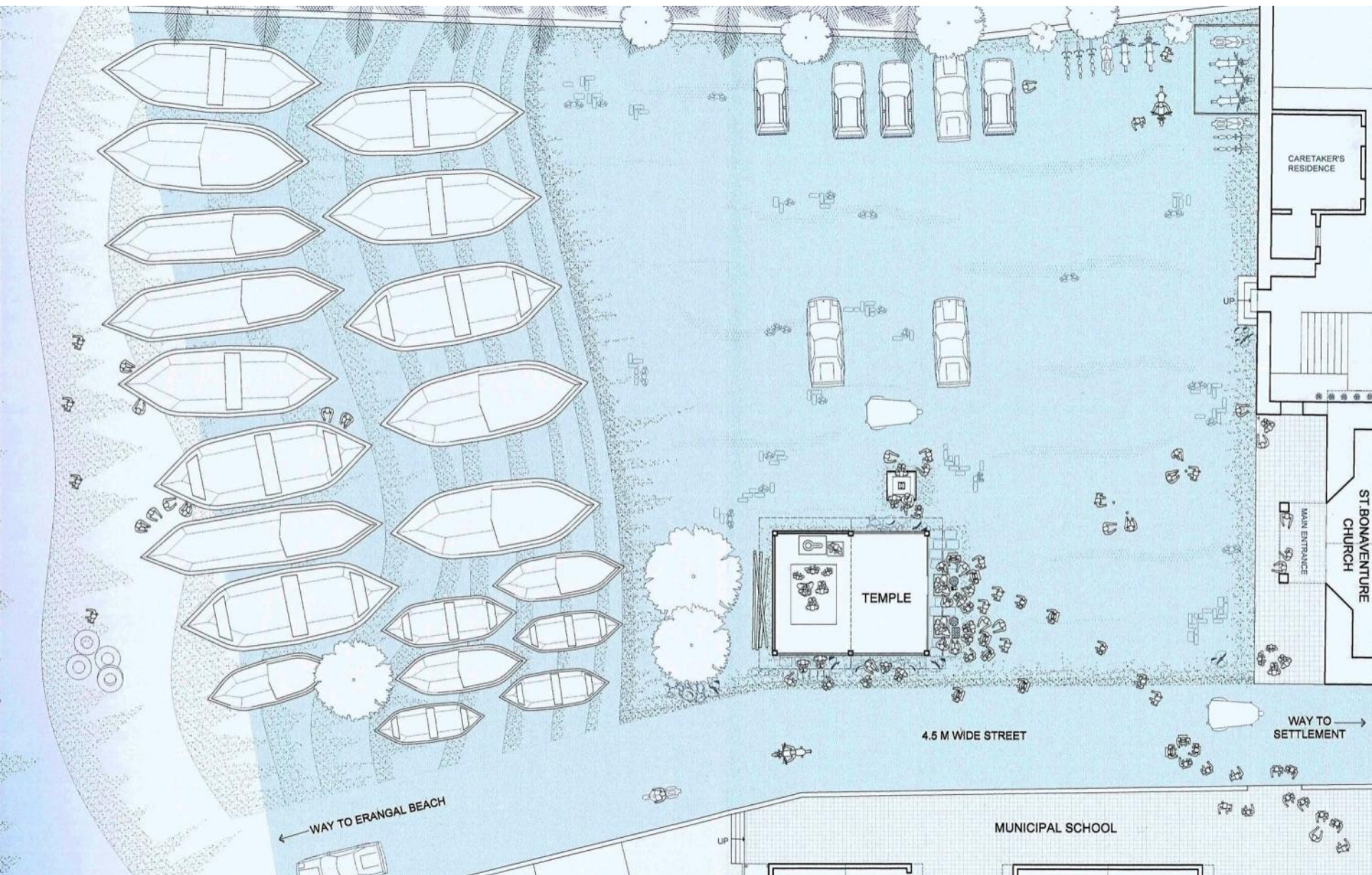
- Very distinctive collective public realm
- Created by meandering streets and open spaces
- Actively used community spaces
- 4 streets and 3 chowks

Community Values

- Uses the space very actively
- Extensions of their houses
- Open squares used during festivals
- Maintained by community

Issues

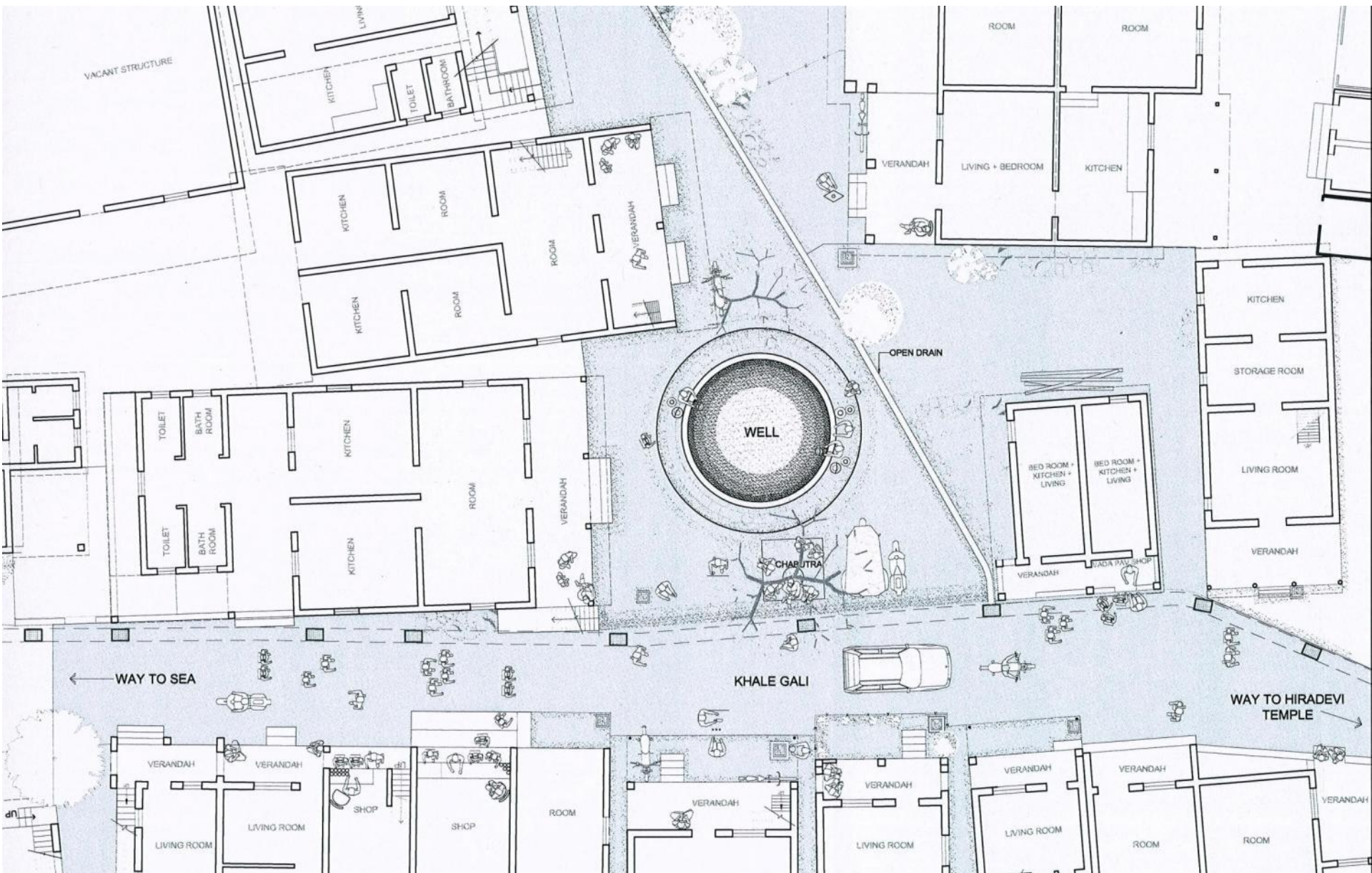
- Growth pressures resulting in encroachments
- Unplanned physical infrastructure deteriorating public realm



Open Space abutting St. Bonaventure Church



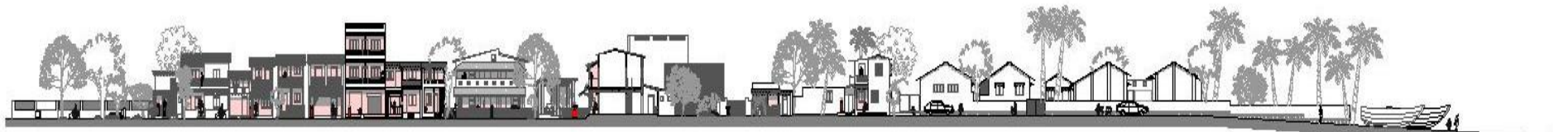
Open Space abutting St. Bonaventure Church







ELEVATION OF HOLI MAIDAN STREET (A-A)



ELEVATION OF KHALEGAON (B-B)

Elevations along Holi Maidan Street



Holi Maidan Street



Holi Maidan



C. Built form, land use & growth

Inferences / Significance

- Organic form
- Redevelopment of old structures in modern vocabulary
- Demand for space within
- Surroundings are experiencing development
- Haphazard development

Community Values

- Concerned over unregulated growth
- Need to expand and make additions to the structures with growing families

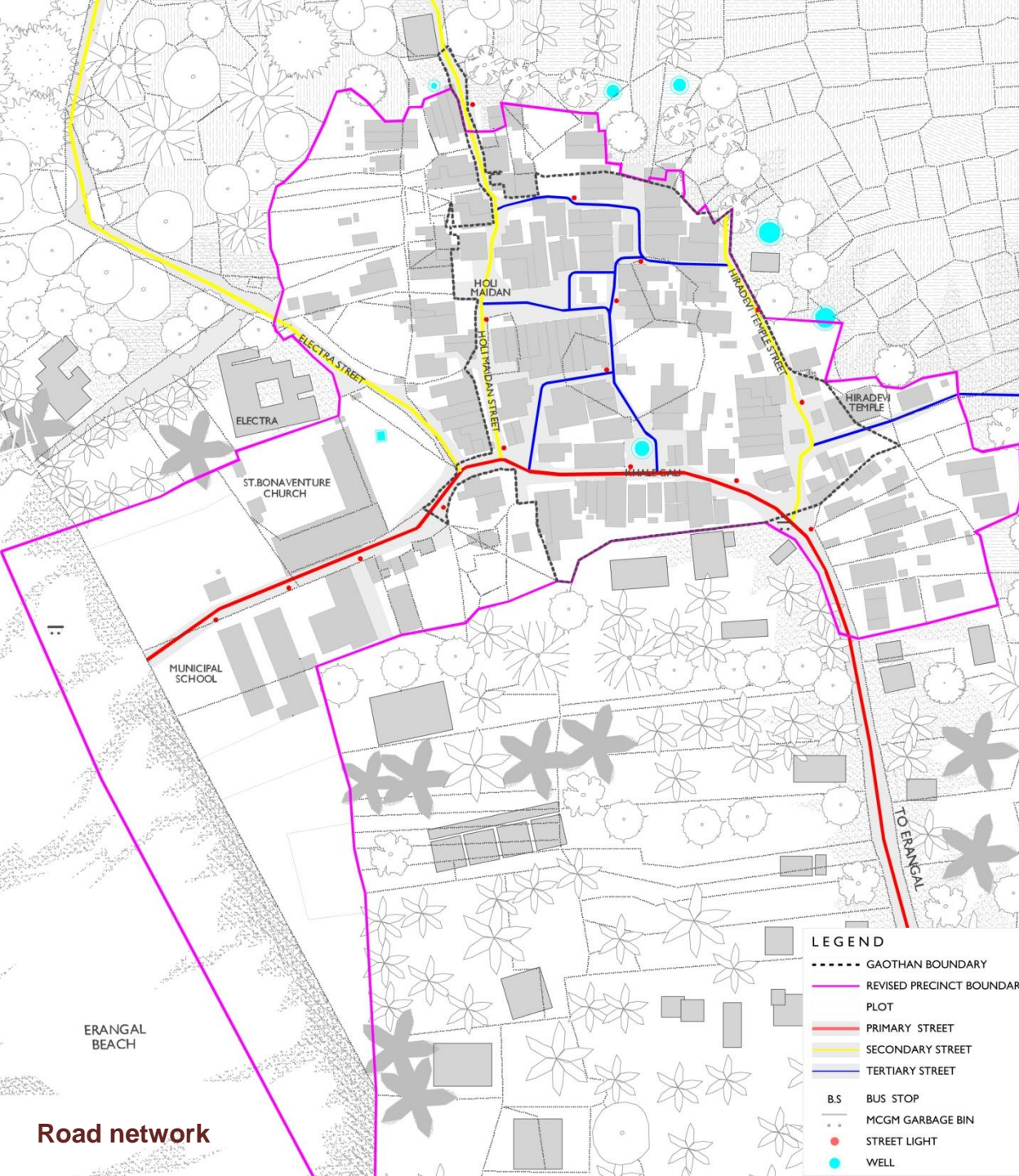
Issues

- Witnessing development and expansion due to growth pressure
- Incongruent, haphazard growth and flouting development regulations
- CRZ Regulations impose restrictions
- Current planning addresses macro city level context









D. Physical infrastructure

Inferences / Significance

- Unplanned and insufficient infrastructure – piecemeal provision
- Narrow and undeveloped streets, insufficient pressure, open disposal of sewage, irregular solid waste management
- Adequacy and quality important to retain the character and use of public realm

Community Values

- Strongly feels about insufficient and inefficient infrastructure
- Stresses on improving infrastructure

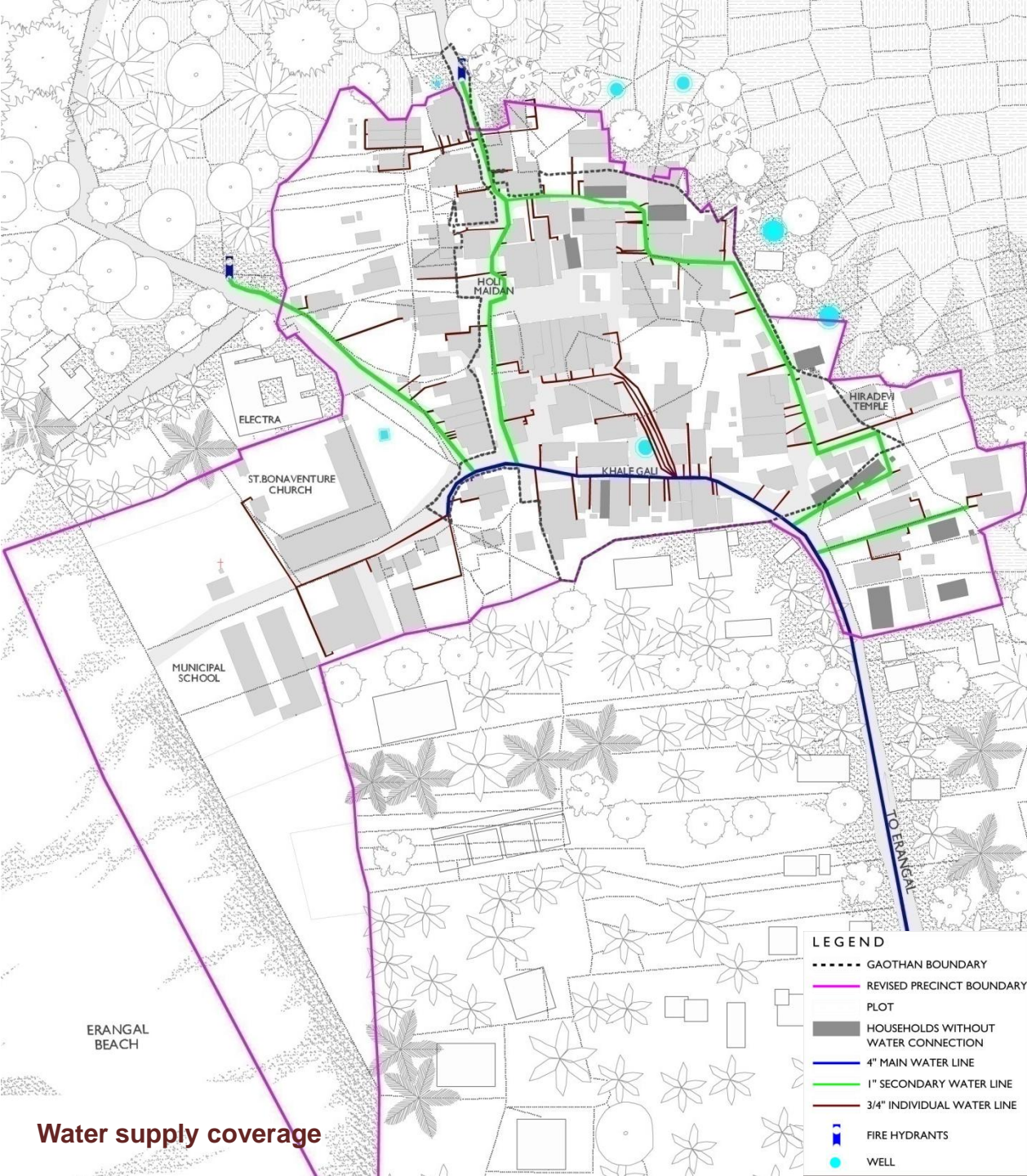
Issues

- Growth within the settlement and in the surroundings will put pressure on the existing infrastructure





D. Physical infrastructure

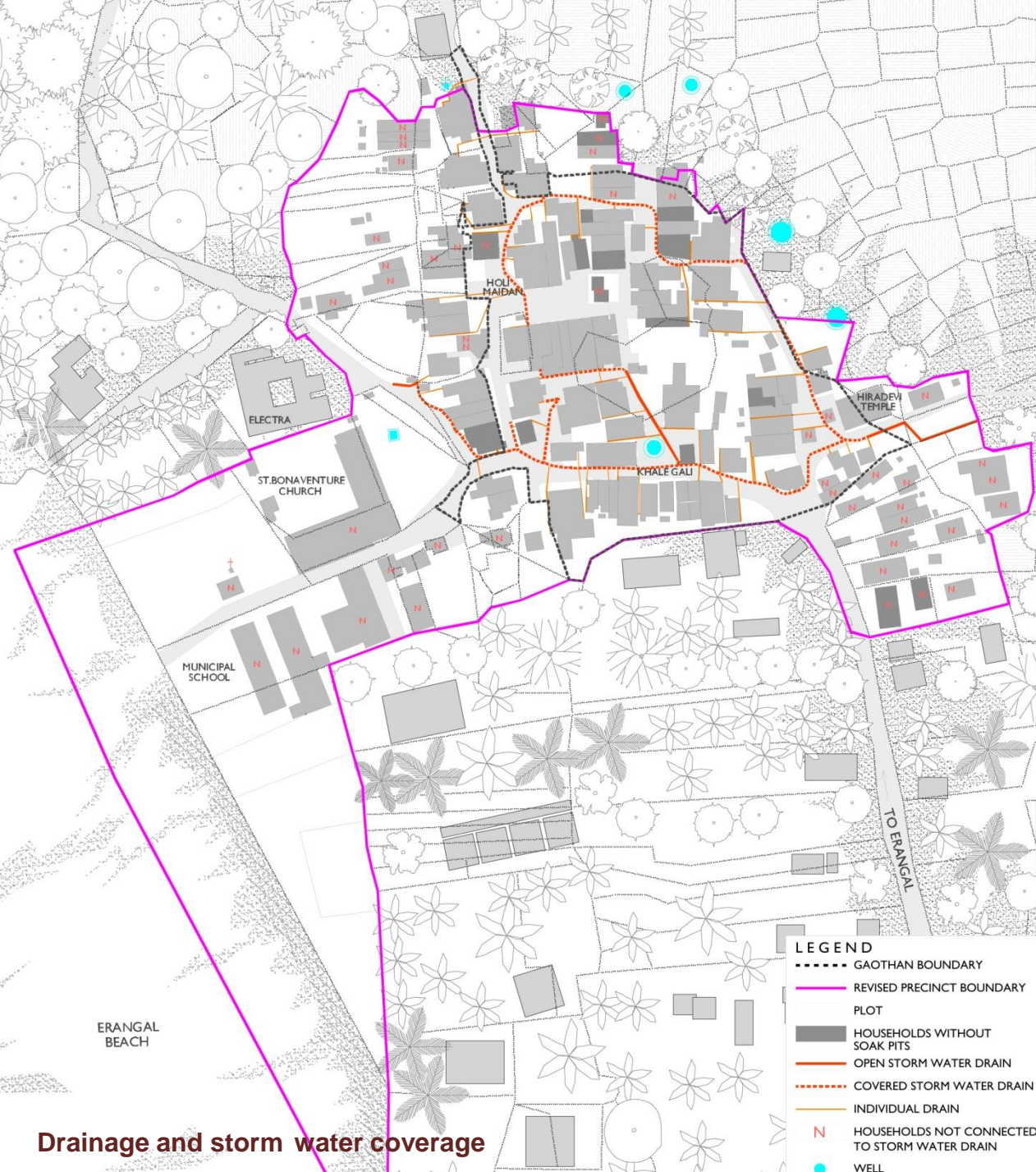


Water supply coverage





D. Physical infrastructure



Drainage and storm water coverage



Open drain



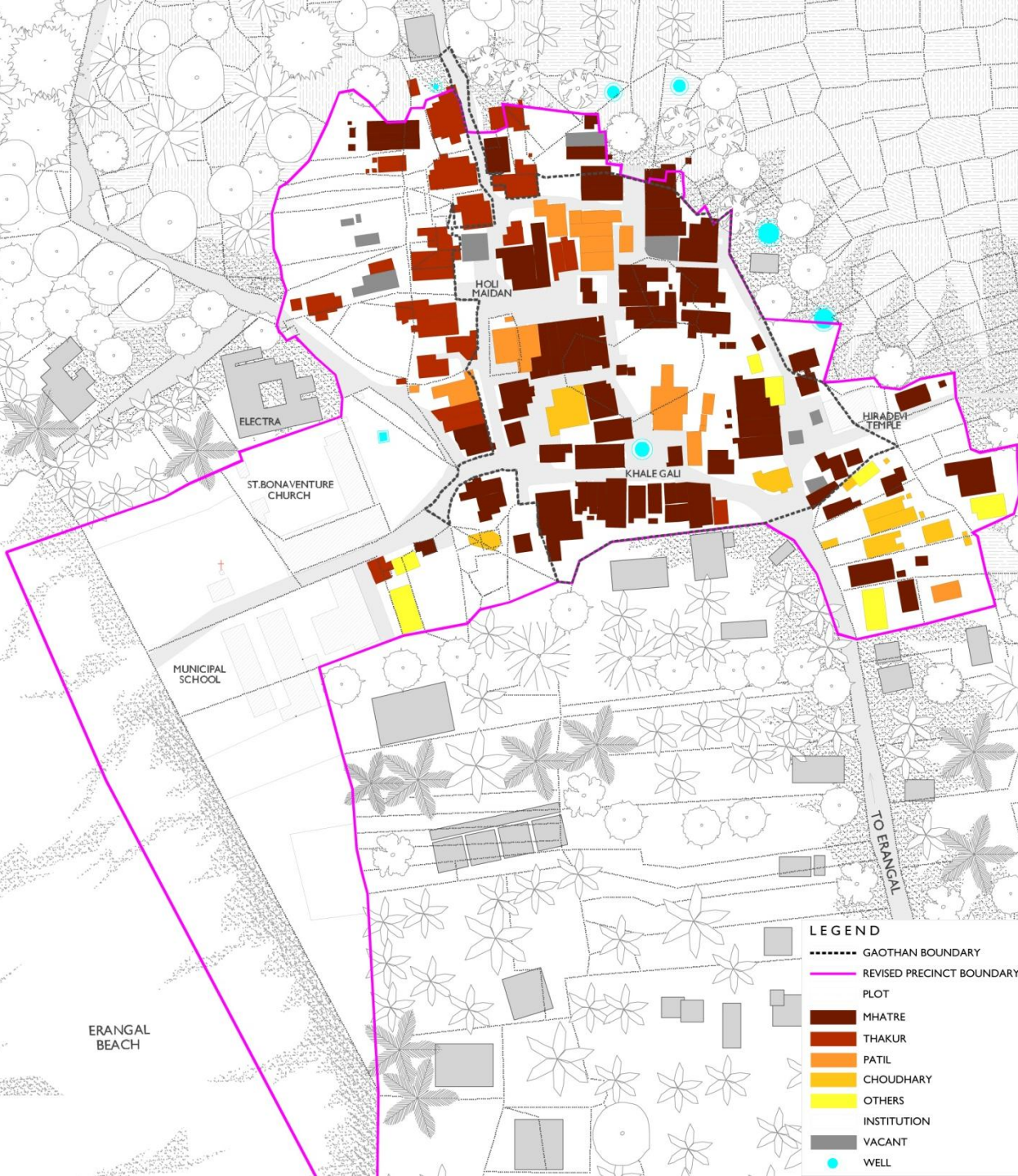
Waste water disposed into open land







Solid waste management



E. Community Structure

Inferences / Significance

- Predominant community - by Kshatriya Bhandaris
- Homogenous – no outsiders allowed to reside
- Homogenous community pattern has resulted in continuity of the social fabric and cultural practices
- Association - Shaishav Kshatriya Bhandari Samaj, represents the communities needs and informally regulates

Community Values

- Prides in its village like character
- SKBS is an outcome of the responsibility to the settlement

Issues

- SKBS not sufficiently empowered to raise resources to effect improvements

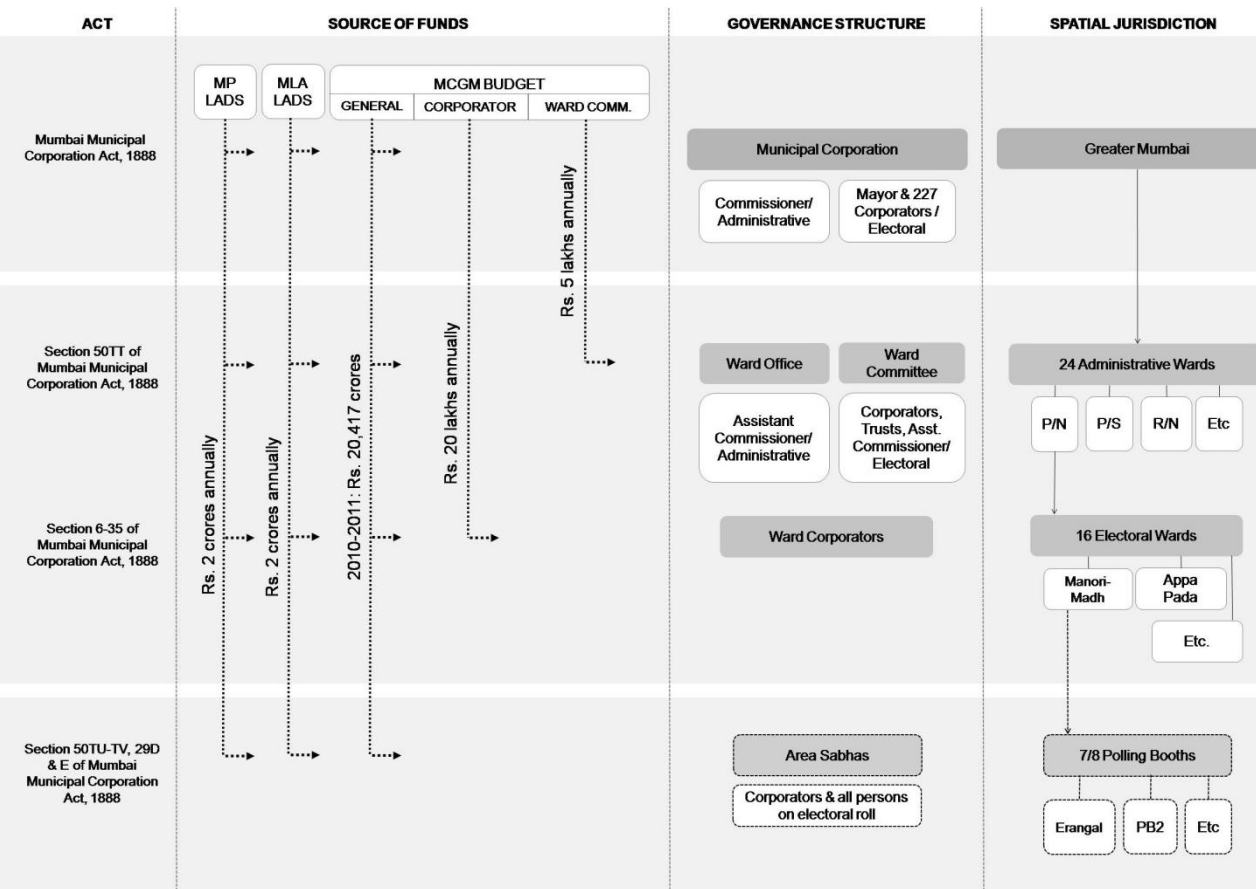
F. Cultural Practices











G. Governance

Inferences / Significance

- Falls in P/N administrative ward
- Next level is Electoral ward
- Receives limited funds as a part of the ward corporator's budget
- Additional funds allocated through MPLADS and MLALADS

Community Values

- SKBS represents communities need to the Corporator, MP & MLA
- Being a small settlement does not receive priority in fund allocation
- Ward committee and corporator funds are insufficient to undertake adequate development works

Issues

- Lack of fund allocation for development works
- Figures low on priority list for development works in the ward

4. OBJECTIVES, STRATEGIES & PROPOSALS



Objectives

1. To conserve the architectural and cultural heritage
2. To improve and upgrade the physical infrastructure
3. To regulate growth within the precinct in harmony with the existing scale, typology and roof scapes
4. To retain and enhance the character of the public realm.
5. To facilitate planned development around the precinct.
6. To solicit the collaboration of the community in all of the above.

Strategies

1. Identify the architectural and cultural assets with the community
2. Identify an area around the precinct for planning and regulating development
3. Propose physical improvements in the public realm and build physical infrastructure in an integrated manner.
4. Propose 'place based' regulations & guidelines to regulate & guide development within the precinct and in the surrounding area
5. Delineate a role for organizations such as SKBS in the implementation of improvements in the precinct and the area around.
6. Identify resources for effecting the improvements from within the precinct and its surroundings.

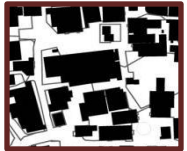
Issue Areas



A. Architectural Heritage



B. Cultural practices



C. Builtform, landuse & growth



D. Physical infrastructure



E. Public realm



F. Community structure



G. Governance

Proposal Areas

Architectural heritage & cultural practices
(3 proposals)

Builtform, landuse and growth
(5 proposals)

Physical infrastructure
(6 proposals)

Public realm
(4 proposals)

Community structure & governance
(2 proposals)

A. Builtform, landuse & growth

1. Prepare a detailed plan for the Planning Area
2. Frame development controls & guidelines to conserve heritage & public realm and regulate growth in the Precinct
3. Frame development controls & guidelines to regulate growth in the Planning Area
4. Incorporate the Area Plan in the Development Plan of Mumbai
5. Devise a strategy for government land and the assets created by Area Plan

B. Physical infrastructure

6. Design schematic water supply network in the Precinct
7. Design schematic sewerage network and disposal system in the Precinct
8. Suggest improvements to solid waste collection and disposal in the Precinct
9. Design water supply network for the Planning Area
10. Design sewerage network and disposal system for the Planning Area
11. Locate solid waste collection points in the Planning Area

C. Public Realm

- 12. Develop streets and 5 open spaces in the Precincts
- 13. Design schematic street Sections for the Planning Area
- 14. Develop the Talav in the Planning Area
- 15. Develop 3 public spaces along Danapani Beach

D. Architectural Heritage & Cultural Practices

- 16. Undertake restoration for 7 structures
- 17. Design and conduct Precinct heritage walk
- 18. Create the prototypes of Tulsi Planters for replacement in the Precinct

E. Community Structure & Governance

- 16. Strengthen the Capacity of Saishav Kashtariya Bhandari Samaj
- 17. Devise an implementation strategy for projects

5. Schematic Proposals

- A. Builtform, Landuse & Growth**
- B. Physical Infrastructure**
- C. Public Realm**
- D. Architectural Heritage & Cultural Practices**
- E. Community Structure & Governance**



Issue Areas



A. Architectural Heritage



B. Cultural practices



C. Builtform, landuse & growth



D. Physical infrastructure



E. Public realm



F. Community structure



G. Governance

Proposal Areas

Architectural heritage & cultural practices
(3 proposals)

Builtform, landuse and growth
(5 proposals)

Physical infrastructure
(6 proposals)

Public realm
(4 proposals)

Community structure & governance
(2 proposals)



A. Builtform, Landuse & Growth

Features

- Planning area - 34.20 Ha
- Land pooling/TPS mechanism
- Ensures meaningful transformation of the edge
- Enables systematic and well planned provision of infrastructure.

1. Prepare a detailed plan for the Planning Area

Planning Area



A. Builtform, Landuse & Growth

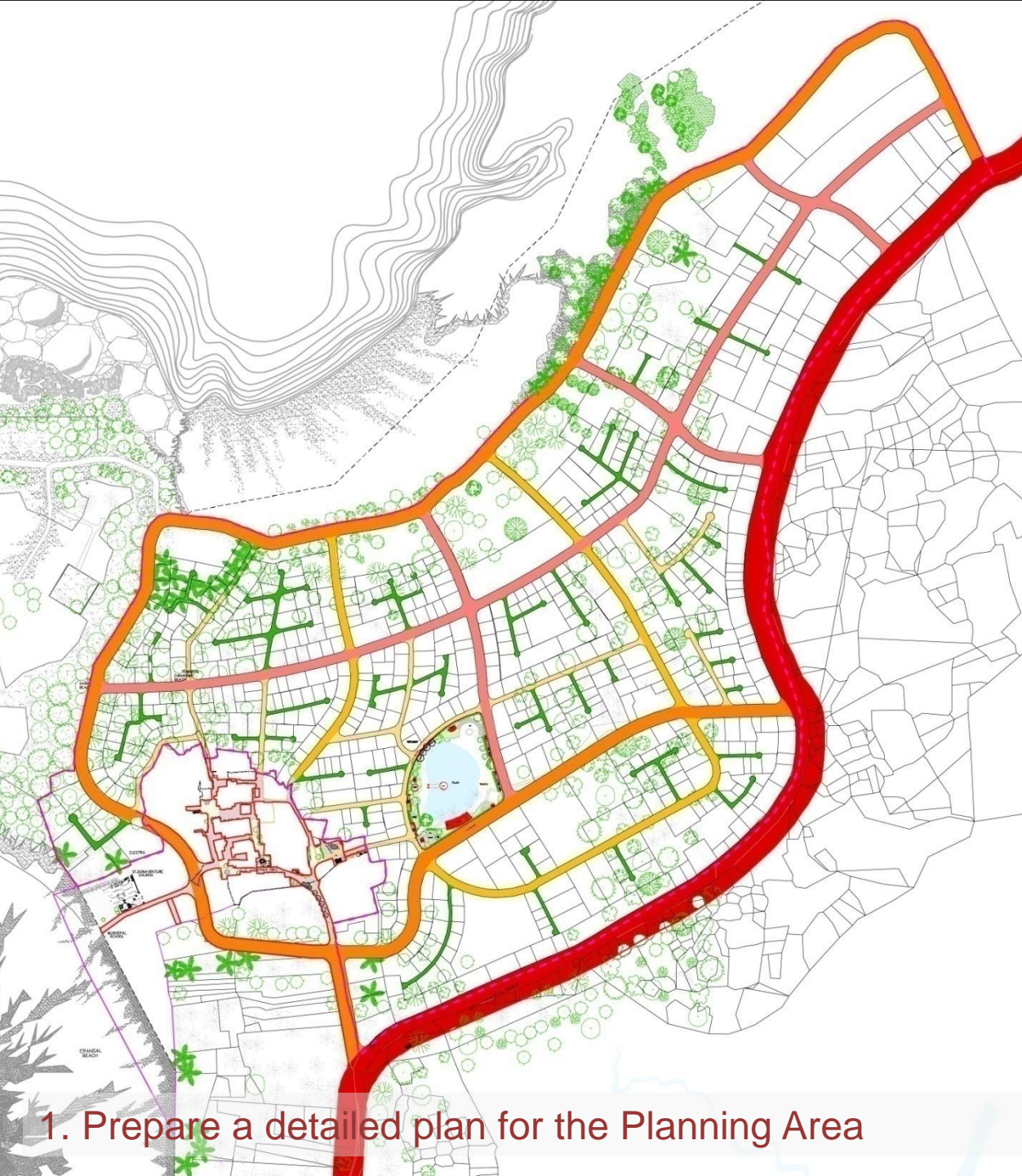
Features

Approximately 2.45 Ha of land appropriated for public purpose, utilities and sale.

Talav area specially developed

1. Prepare a detailed plan for the Planning Area

Location of Public Spaces



A. Builtform, Landuse & Growth

Features

- Roads – 7.08 Ha (21%)
- Hierarchy of roads that enables smooth flow of traffic
- Systematic provision of infrastructure

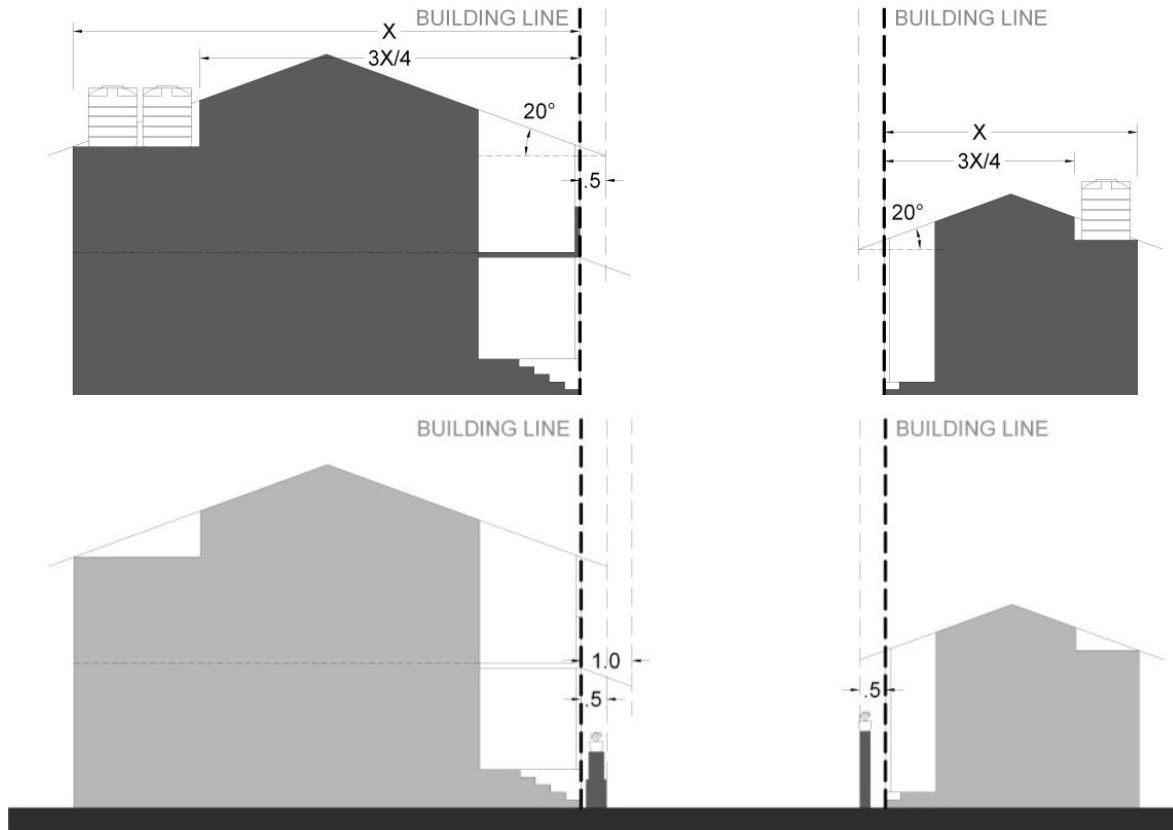
1. Prepare a detailed plan for the Planning Area

Road Network

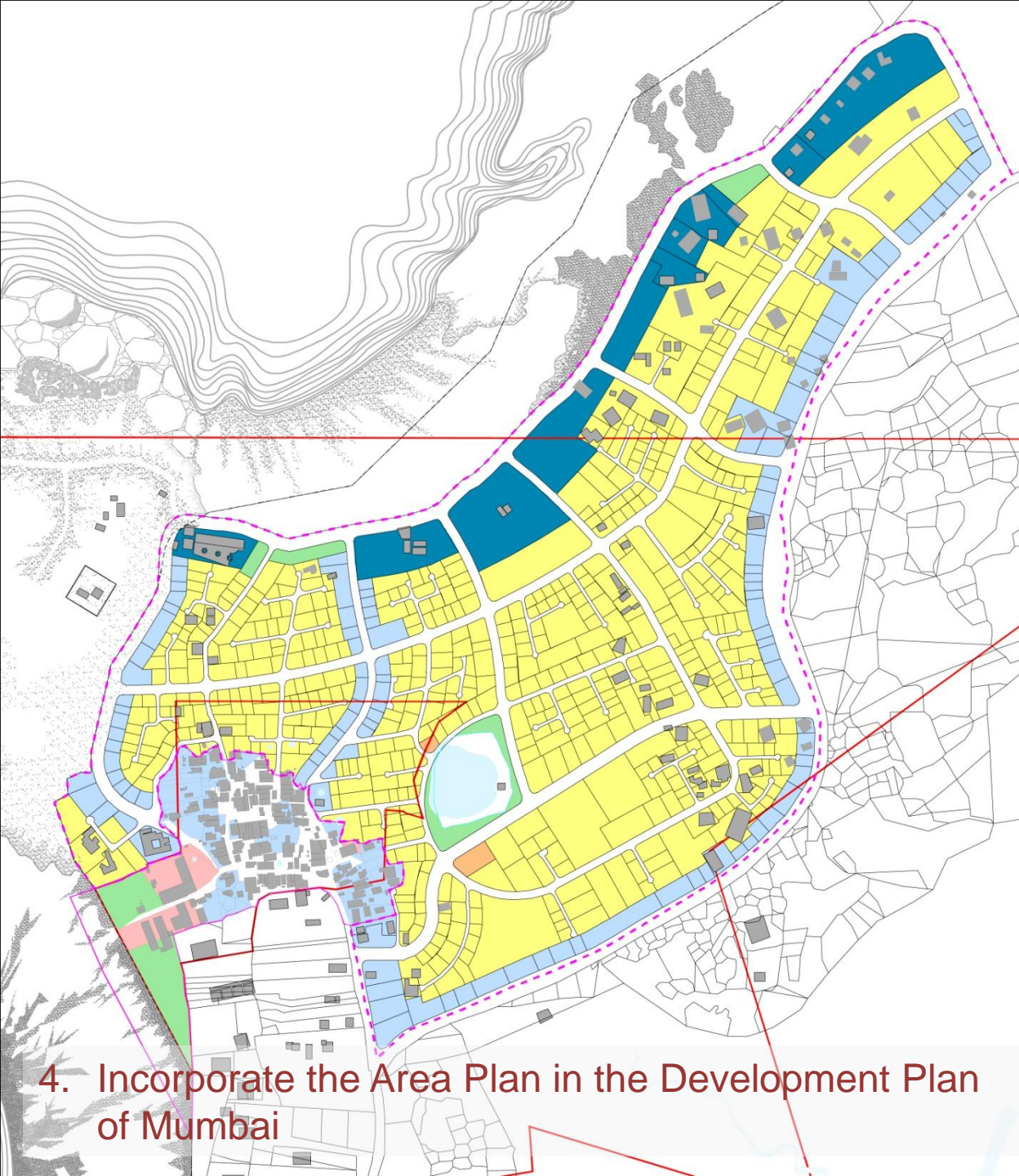
A. Builtform, Landuse & Growth

Features

- Basic principle “maximum Retention, sensitive Restoration and cost-effective Repair”
- Guidelines for the public realm- open spaces and streets



2. Frame development controls & guidelines to conserve heritage & public realm and regulate growth in the Precinct



A. Builtform, Landuse & Growth

Features

- Proposals for the Planning area and the precinct – zoning, road network and development guidelines
- Heritage precincts or old settlements can be dealt in this manner

4. Incorporate the Area Plan in the Development Plan of Mumbai

Proposed Land Use

The map illustrates a proposed road network within a village. Key features include:

- Topography:** Contour lines indicating elevation, with a river flowing through the upper left portion.
- Proposed Roads:** Labeled as 'DP ROAD' with specific distances:
 - DP ROAD 13.40 M (multiple segments)
 - DP ROAD 27.40 M
 - DP ROAD 13.40 M (vertical segment)
 - DP ROAD 13.40 M (horizontal segment)
- Land Use and Parcels:** Various land parcels are outlined, with a central area highlighted in yellow and a specific parcel highlighted in red.
- Infrastructure:** A road labeled 'ROAD 13.40 M' is shown at the bottom, and a road labeled 'ROAD 27.40 M' is shown on the right.

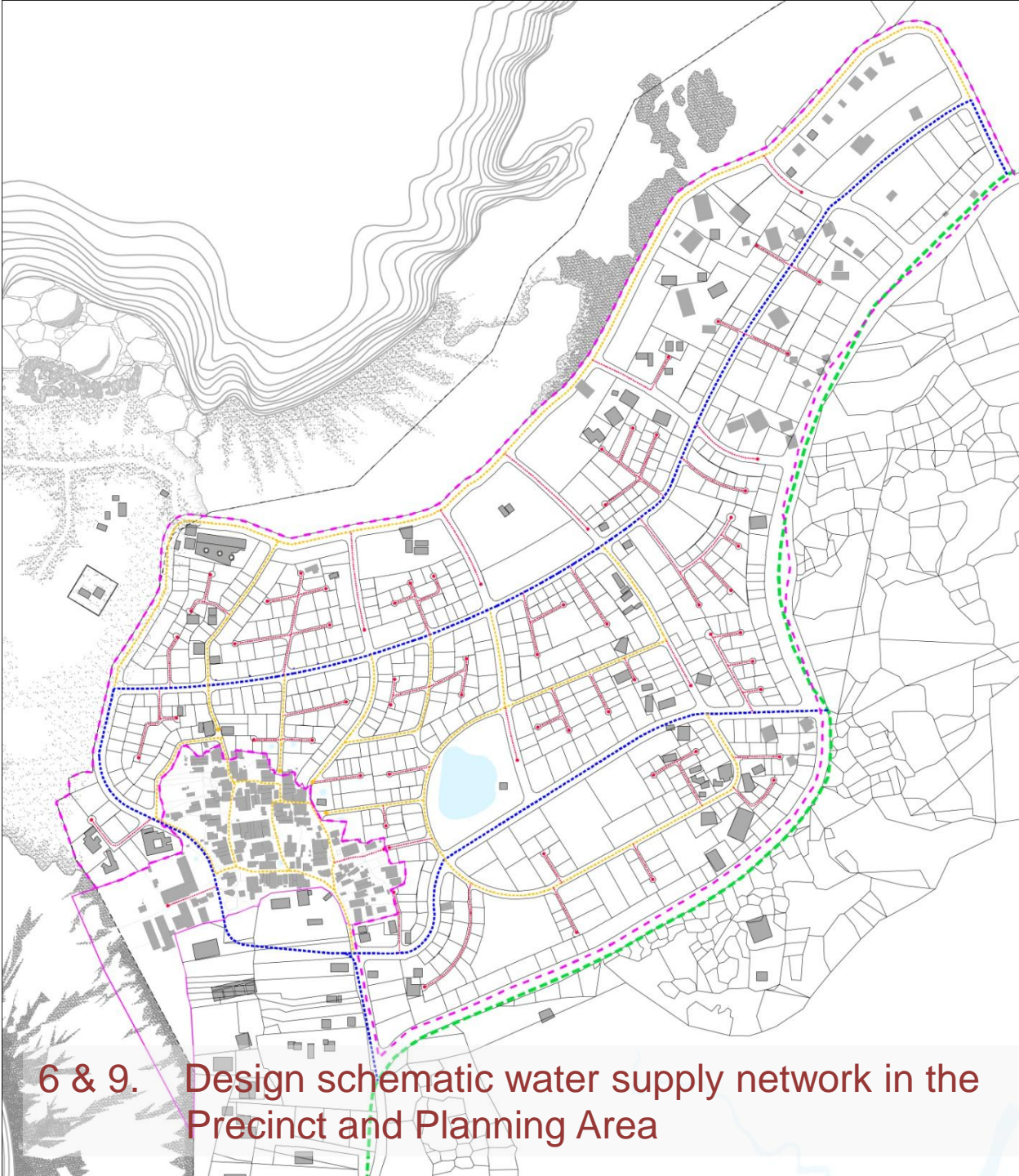
B. Physical infrastructure

Features

- 2 phase design – for the precinct and the planning area

6 & 9. Design schematic water supply network in the
Precinct and Planning Area

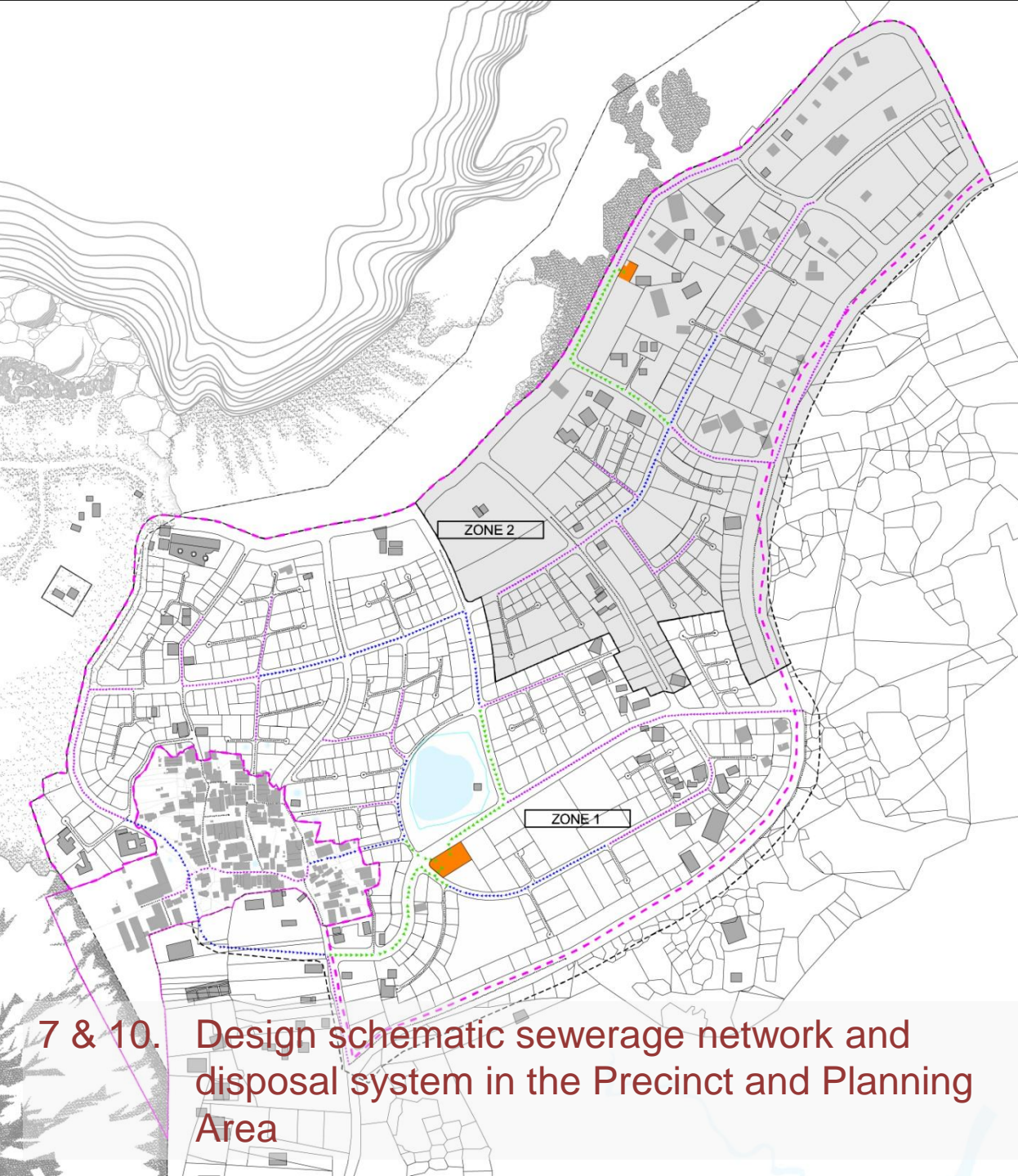
Water Supply Network



B Physical infrastructure

Features

- Decentralized sewerage system proposed
- 2 phase design – for the precinct and the planning area



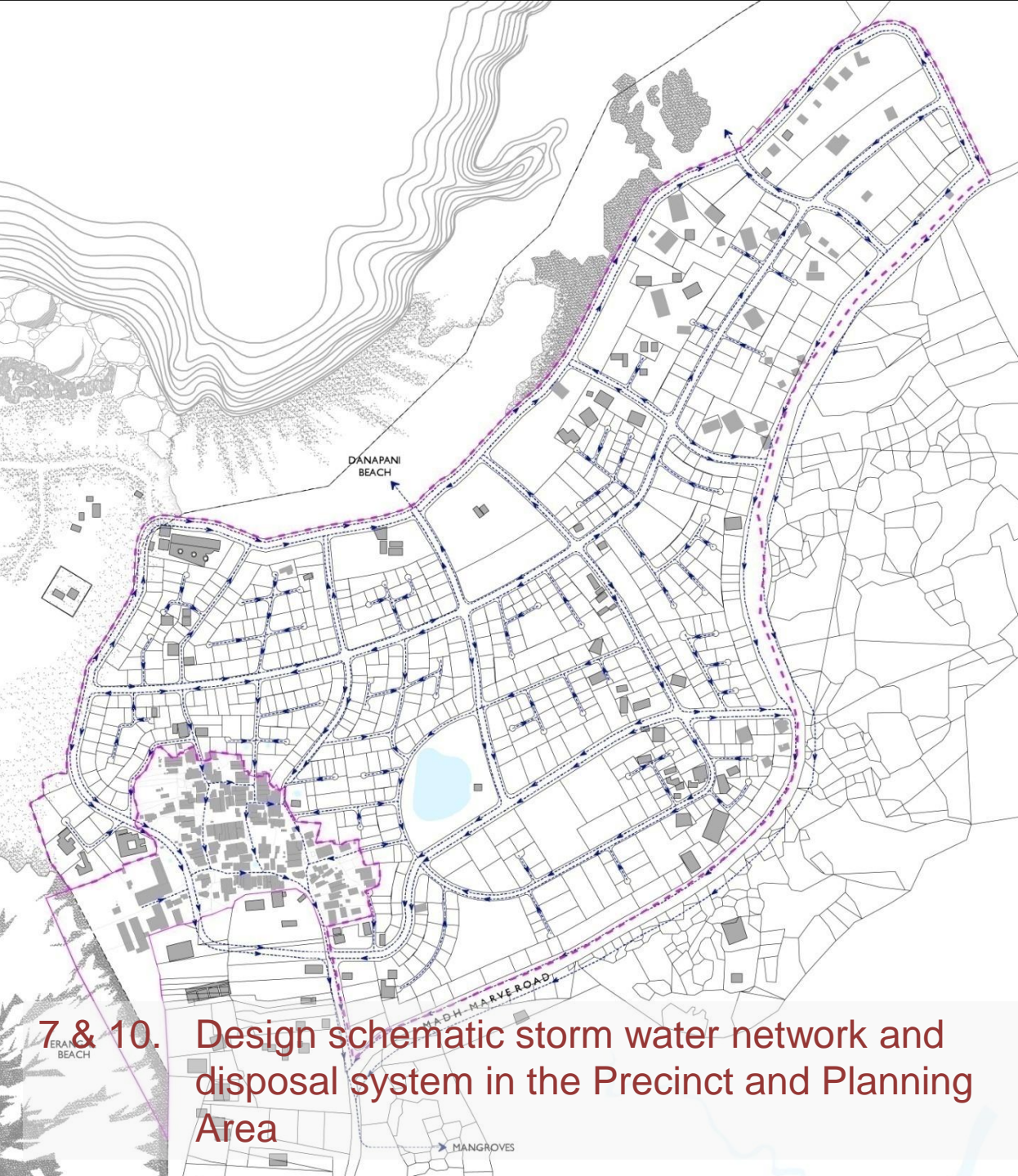
7 & 10. Design schematic sewerage network and disposal system in the Precinct and Planning Area

Sewerage Network

B. Physical infrastructure

Features

- Schematic design considering the slope of the terrain
- Two major outlets towards the beach
- One towards the mangroves



7 & 10. Design schematic storm water network and disposal system in the Precinct and Planning Area

Storm Water Network

B. Physical infrastructure

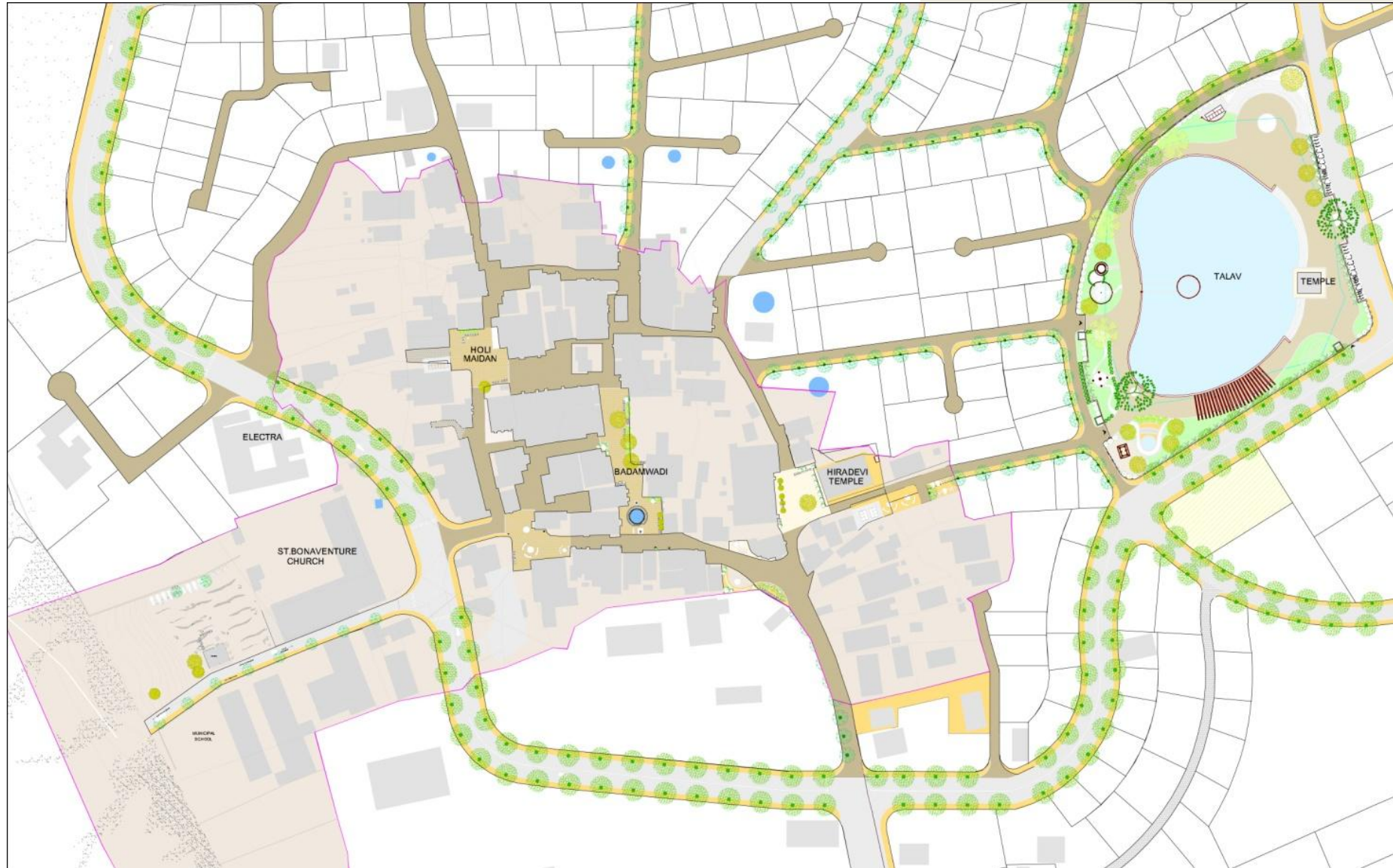
Features

- 5 collection points schematically identified at 500 m radius in the precinct
- Proposed on 12m sub arterial road

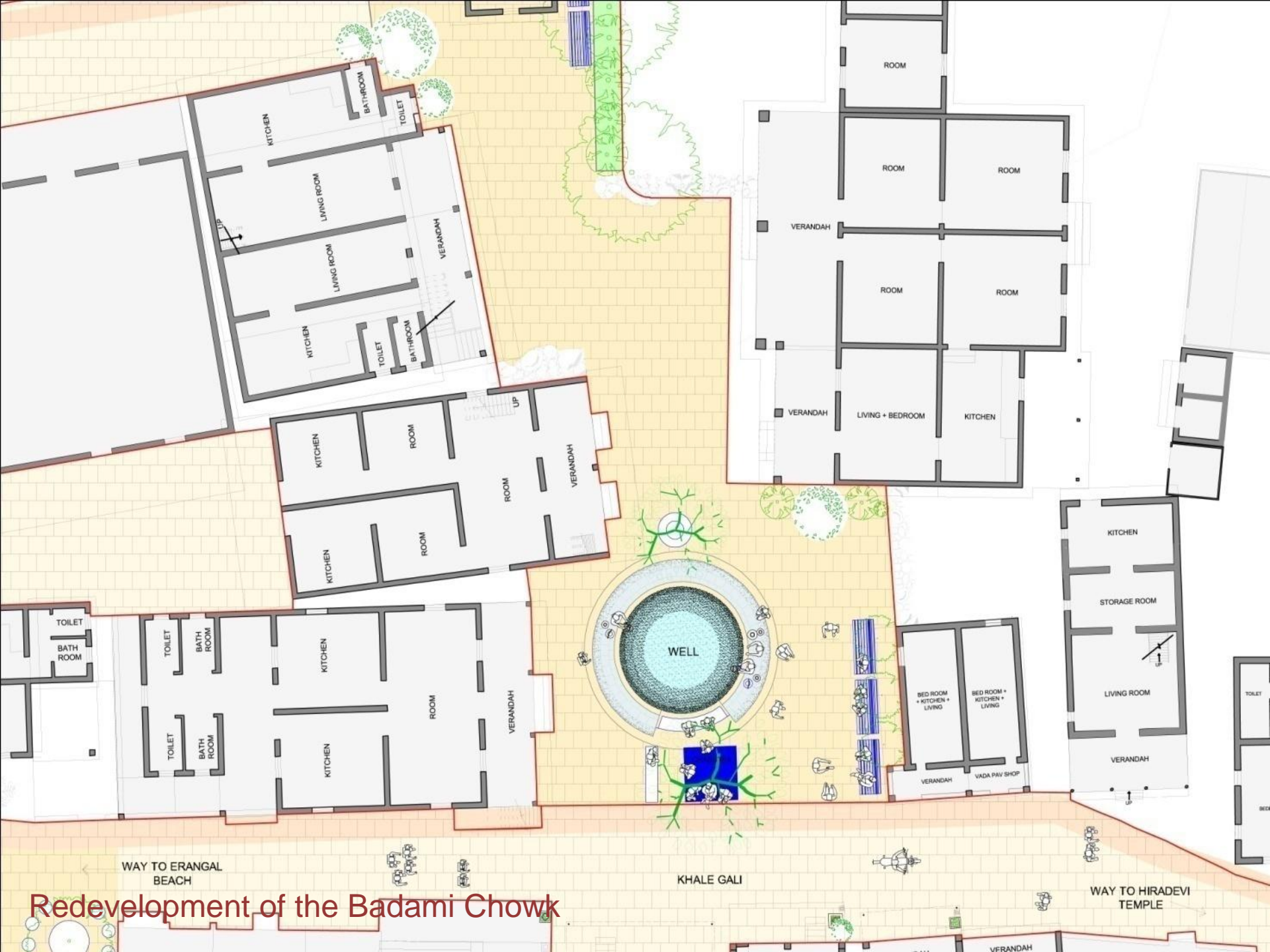


11. Locate solid waste collection points in the Planning Area

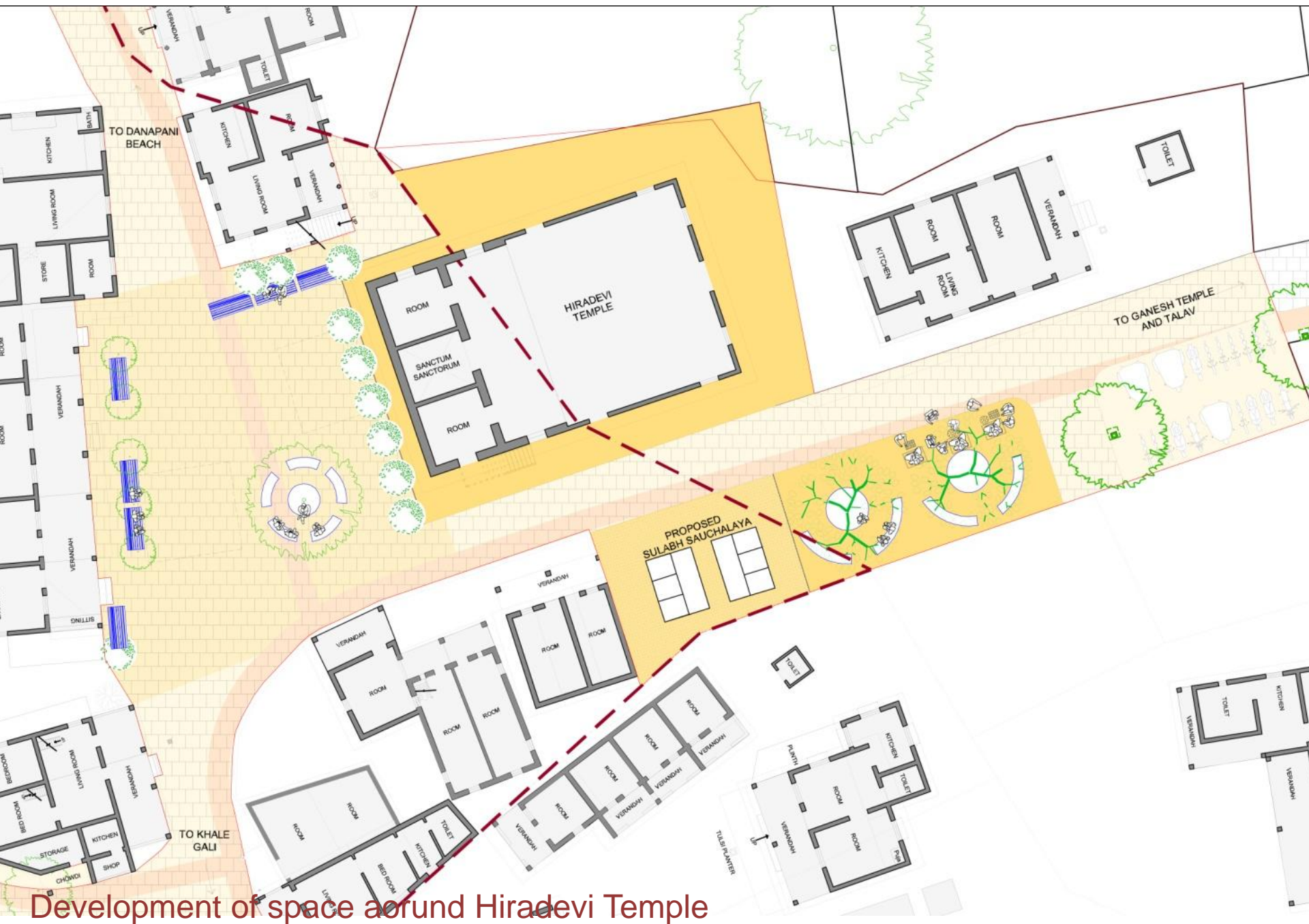
C. Public Realm

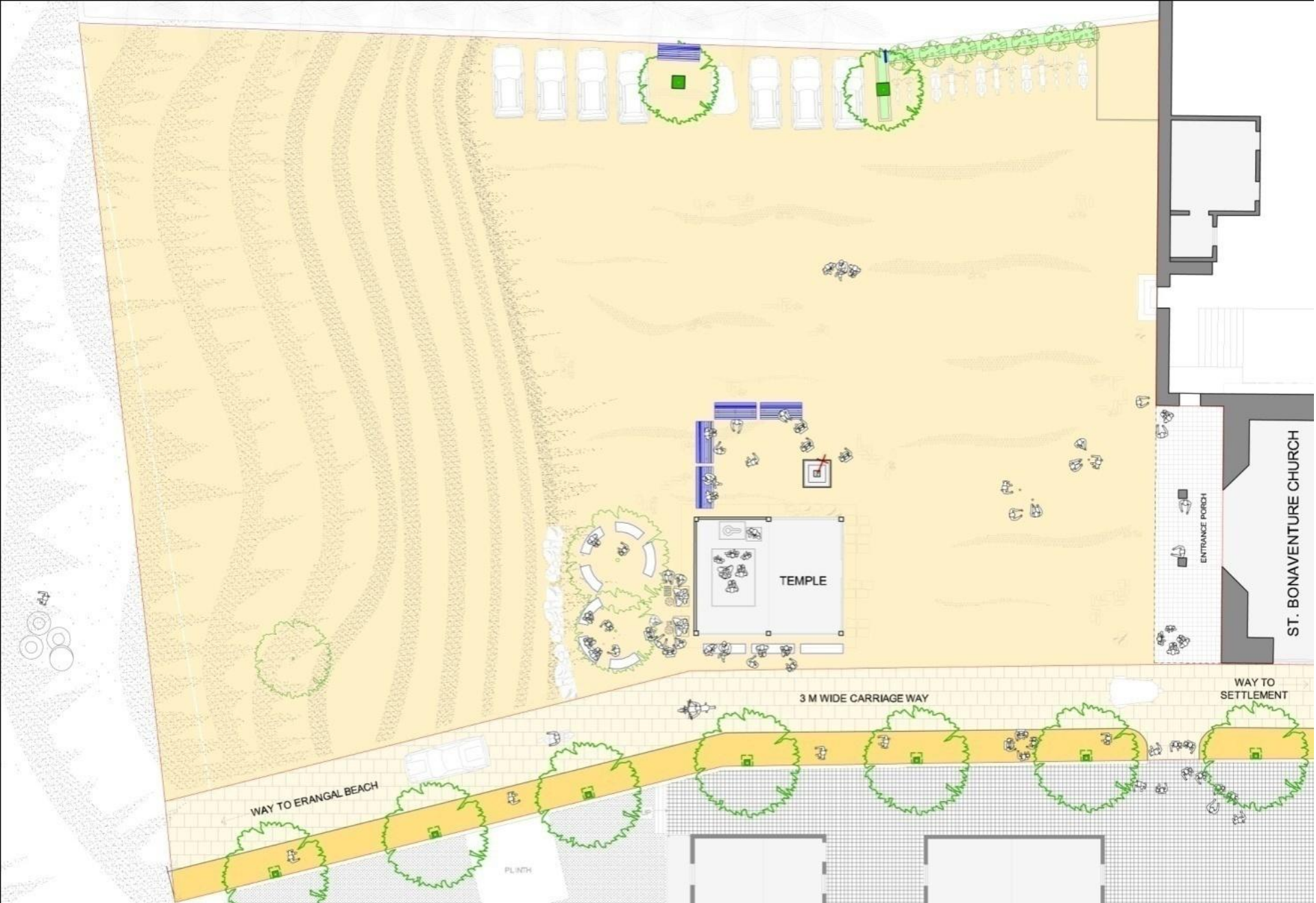


12. Develop streets and 5 open spaces in the Precinct

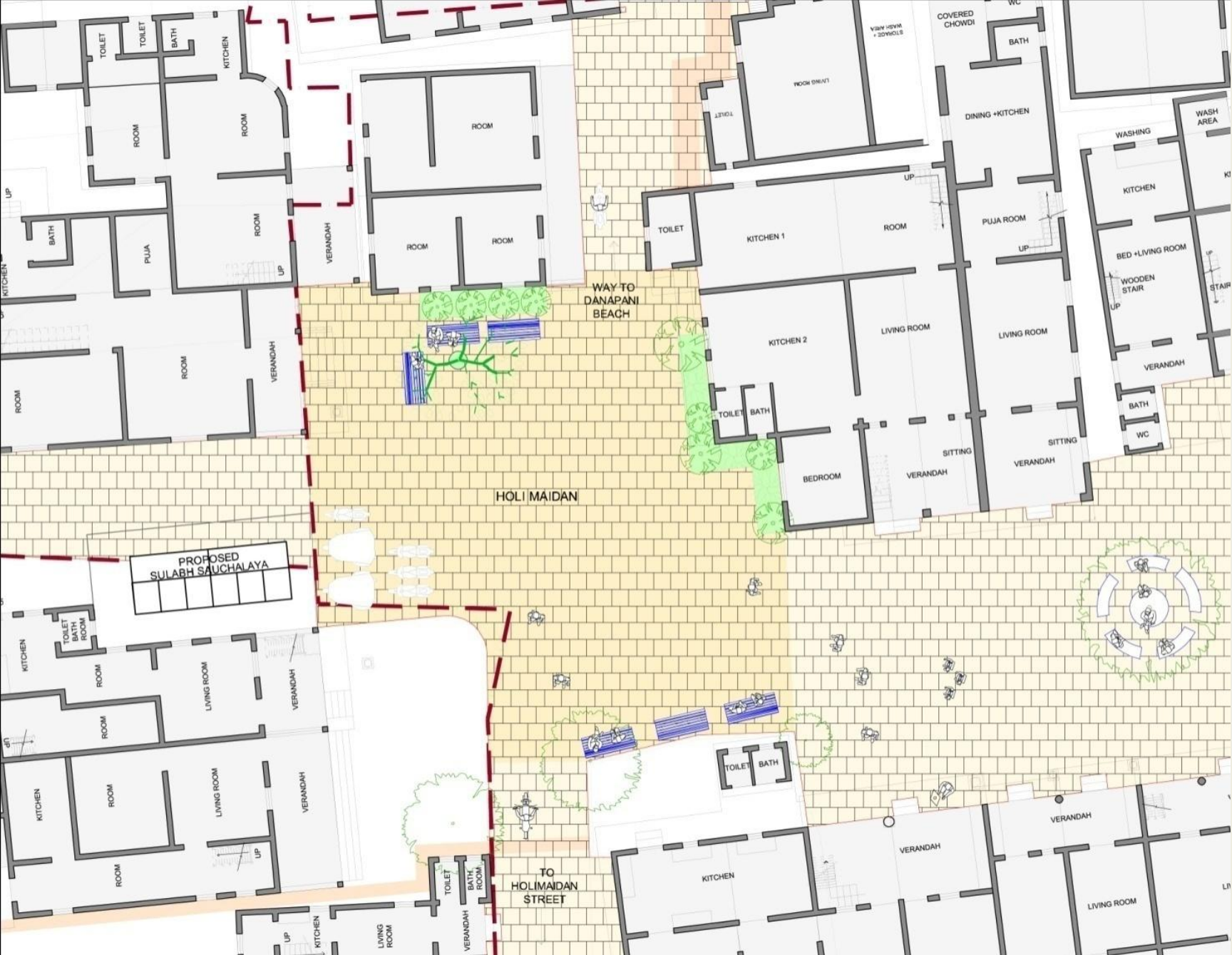


Redevelopment of the Badami Chowk





Development of Open Space in front of Bonaventure Church



Development of Holi Maidan

C. Public Realm



D. Architectural Heritage & Cultural Practices

16. Undertake restoration for 7 structures

D. Architectural Heritage & Cultural Practices



17. Design and conduct Precinct heritage walk

D. Architectural Heritage & Cultural Practices



18. Create the prototypes of Tulsi Planters for replacement in the Precinct

THANK YOU

